

20th  
Annual

*Quest of the West*  
CATTLE SALE



MARCH 7TH, 2025

Quest  
of the West  
— Cattle Sale —

# Quest of the West

— Cattle Sale —

Welcome to our 2025 sale!

~ Bott, Bunker, Loveless & Sorensen Families



@ Quest of the West Cattle Sale  
 @ Loveless Gelbvieh  
 @ Sorensen Angus Ranch

View Loveless Gelbvieh Cattle and Bulls  
 at [www.lovelessgelbvieh.com](http://www.lovelessgelbvieh.com)



VIEW/BID LIVE ON THE INTERNET:



To register and follow the auction in real time on the internet,  
 log on to the website, <http://www.liveauctions.tv>  
 For more information or support call 817-725-8595

## PAP Risk Factor High Elevation Test Chart

*PAP test conducted at elevation above 7,000 feet*

All Quest of the West Sale Bulls PAP Tested at 7,200+ feet Elevation

PAP	Use at Low Elevation	Use at Moderate Elevation	Use at High Elevation	Use at Extreme Elevation
Score	< 4,000 feet	4,000-5,000 feet	5,500-7500 feet	>7,500 feet
34-39	Low Risk	Low Risk	Low Risk	Low Risk
40-45	Low Risk	Low Risk	Low Risk	Low Risk
46-49	Moderate Risk	Moderate Risk	Moderate Risk	Moderate Risk
>=50	Moderate Risk	Moderate Risk	High Risk	High Risk

- Special consideration should be given to the amount of time the animal was exposed to elevation (>5,500 feet) prior to testing. The predictability and repeatability of the PAP measurement improves with longer the exposure to higher elevation (minimum of 4 weeks is required).
- This chart is based on animals greater than 10 months of age.
- Testing of younger animals (<10 months) may result in a greater variability to the predictive ability of the measurement.
- Risk—Defined as the likelihood of an animal developing pulmonary hypertension themselves or being at risk for having a genetic predisposition for the disease.

### BREEDING GUARANTEES

All bulls in this sale are guaranteed “breeders” the day of the sale. In the event a buyer finds a bull to be a “non-breeder”, he must immediately take the following actions:

1. Notify the seller within six (6) months of the purchase.
2. Return the bull to the seller at the buyer’s expense in healthy and good condition.
3. At that time, the seller may give the buyer a bull of like quality as a replacement, or give the seller credit toward the purchase of another bull at a later date.
4. Seller has the right to prove the bull a “breeder” before giving credit or returning the bull.
5. Guarantees do not apply to injuries (i.e. broken legs, stifles, reproductive injuries, etc.)
6. All guarantees are void in cases where the bull is fit for show, is subject to hormonal treatments, or has been subject to abuse in any way.

# Quest of the West

— Cattle Sale —

**Angus • SimAngus  
Balancers • Gelbvieh • Simmental**

## ACCOMMODATIONS

For reservations, please call the Quality Inn (801-798-9400) or the Hampton Inn (385-248-0550). Both are just off I-15 on Hwy 6 (Exit 257 Northbound; Exit 258 Southbound). On Hwy 6 going east take first Left at the light, and next left after Chappy's Gas Station.

## SALE LOCATION

The sale will be held in the Heritage Arena at the Spanish Fork Fairgrounds, 475 S Main Street, Spanish Fork, UT

## INSPECTION OF SALE CATTLE

All Cattle will be available for viewing all day Friday March 7th through the conclusion of the sale at the sale facilities. Cattle may also be viewed prior to Wednesday March 5th at the respective ranches at Spanish Fork, UT, and feedlot in Delta, UT. Please contact the individual sellers to make arrangements to view the cattle prior to their arrival at the sale facility.

## TERMS AND CONDITIONS

The terms of the sale are cash or check unless arrangements have been made between buyer and seller prior to the beginning of the sale. The animal becomes the property, responsibility and risk of the buyer as soon as declared sold by the auctioneer.

## ANNOUNCEMENTS

Announcements from the Auction Block will take precedence over any other printed matter in the sale catalog or supplement sheets.

## BIDDING

Each Animal will sell to the highest bidder. Any disputes will be settled by the auctioneer whose decision is final.

## LIVESTOCK MORTALITY INSURANCE

To properly insure your investment, James F. Bessler, Inc., will be available to assist you with mortality insurance. Contact Jim Bessler at 630-945-3483 or jim@jamesfbessler.com.

## RISK & LIABILITY

We the sellers of the cattle offered in this sale, will not be held liable for any accidents that may occur for whatever reason and those attending must do so at their own risk. The sellers and their staff, the auctioneer, Spanish Fork City and it's staff assume no liability, legal or otherwise, for any accidents or loss which may occur.

How do you Ballyhoo?  
Ballyhoo  
Printing & Design  
BallyhooPrinting.com  
406•538•7988 Lewistown, MT



Scan for More  
Sale Info

**Friday, March 7<sup>th</sup>, 2025**  
**Spanish Fork, Utah**  
**Spanish Fork Fairgrounds, 475 Main Street**  
**6:00 pm Sale Time • 5:00 pm Dinner**

*Please bring this sale book with you to the sale.*

## **Contacts & Sale Staff**

Sale Day Any of the following Cell Numbers

<b>Circle Four Simmentals</b>	Carl Bott . . . . .	435-749-9397 (m)
<b>S7 Simmentals</b>	Brett Bunker. . . . .	435-864-7815 (m)
<b>Loveless Gelbvieh</b>	Jeff Loveless . . . . .	801-623-8308 (m)
	Tammy Loveless. . . . .	801-623-8309 (m)
<b>Sorensen Angus Ranch</b>	Shane Sorensen . . . . .	801-420-2962 (m)
	Brian Sorensen . . . . .	801-372-0762 (m)
	Kevin Sorensen. . . . .	801-360-3300 (m)

## Staff

Eric Duarte, Auctioneer . . . . .	541-891-7863 (m)
Brent Robins, Special Representative. . . . .	435-979-5176 (m)
Wade Anderson, Special Representative . . . . .	435-609-9741 (m)
Tery Cotton, Special Representative . . . . .	816-390-3277 (m)
Corbin Redd, Live Auctions . . . . .	385-221-1719 (m)

## Special Guests

Brent Tanner, Executive Director . . . . .	Utah Cattleman's Association
Jeff Young, President . . . . .	Utah Cattleman's Association

## REGISTRATIONS & TRANSFERS

All bulls, unless otherwise noted in the sale catalog are registered. When making settlement, please indicate if Registration papers are needed. Each ranch will send the registration paper to the buyer if requested at the time of settlement.

## SIGHT UNSEEN PURCHASE OPTION

If you are unable to attend the sale or view the cattle prior to the sale, we offer a "sight unseen" purchase option. Please call and give us your specs in advance of sale time and we will select and try to buy the bull(s) meeting your specs for you. If when you take possession of the bull(s) you are not satisfied, you don't own the bull(s).

## CALVING EASE RECOMMENDATION

Some bulls are recommended for use on heifers. These recommendations are based on available tools and knowledge: EPDs, birth weight, extended pedigree and past experience with both sire and dam. This does not mean that you will not have to help any calves, but hopefully most will come with little assistance. Each cattleman needs to base their decisions on their own program and herd.

## DELIVERY

Please contact individual consignors prior to the sale if you need assistance with delivery.



## *Minimum Genetic Requirements*

Marbling EPD (Marb)	+0.65
Dollar Grid Carcass Index (\$G)	+55.0

**The sale catalog will be posted online as well as additional pictures as they become available at [www.questofthewestcattle.net](http://www.questofthewestcattle.net)**

# Angus Bulls



All of the Angus bulls have been sire verified and genomic tested with AngusGS. Buy them with confidence. They are backed by the power of the Angus database, which includes phenotypes and genotypes from herds across the country. We stand behind the pedigrees. By buying the Angus bulls and heifers offered in this sale, you are unlocking the premium potential of AngusLink and other programs.



**1**  
Angus



**2**  
Angus

## SAR Resilient C13

**2**  
Angus

Bull calved: 12/15/23 tattoo: C13 reg: AAA 21131087

Sitz Stellar 726D

Sitz Resilient 10208

Sitz Miss Burgess 1856

Circle L Gus

SAR Paisley Z16

SAR Paisley W22

**ANGUSGS**  
Powered by Neogen GeneSeek

Birth Wt	73
205 Wt	711
Scrotal	39
PAP	38

CE	BW	WW	YW	Milk	\$EN	CW	IMF	RE	Fat	\$W	\$F	\$B
+8	+1	+84	+133	+30	-19	+51	+0.47	+0.3	+0.037	+90	+82	+121

Resilient son that puts together the complete package. Good calving ease option without sacrificing growth. We calved our first Resilient daughters and they are looking to make great cows. Lots 2-4 and 11 are 3/4 brothers. PAP score of 38 at 7,200 feet.

## SAR Resilient C16

**1**  
Angus

Bull calved: 12/16/23 tattoo: C16 reg: AAA 21131088

Sitz Stellar 726D

Sitz Resilient 10208

Sitz Miss Burgess 1856

McConnell Altitude 3114

SAR Jacey Z35

SAR Jacey S20



**ANGUSGS**  
Powered by Neogen GeneSeek

Birth Wt	70
205 Wt	707
Scrotal	38
PAP	44

CE	BW	WW	YW	Milk	\$EN	CW	IMF	RE	Fat	\$W	\$F	\$B
+12	-2.3	+68	+119	+32	-1	+41	+0.73	+0.65	+0.031	+83	+72	+127

Sitz Resilient 10208 is one of the best all around sires ever used at SAR. Whether bred to heifers or cows, he doesn't disappoint. 12 sons sell in the Quest of the West! Lot 1 is a stud! Two full sisters and three maternal sisters to his dam have been retained. His maternal granddam is still working as an 11 year old and calved to her AI date this winter. You won't go wrong with this one. Great carcass traits. Dam had BR 2@96, WR 2@108 on her first two calves. 3/4 brothers sell as lots 7 and 8.



**3**  
Angus

## SAR Resilient C1

**3**  
Angus

Bull calved: 11/25/23 tattoo: C1 reg: AAA 21131085

Sitz Stellar 726D

Sitz Resilient 10208

Sitz Miss Burgess 1856

Circle L Gus

SAR Hallie A9

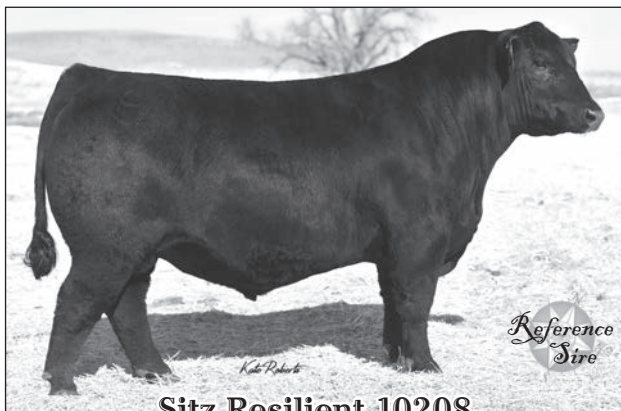
SAR Hallie V14

**ANGUSGS**  
Powered by Neogen GeneSeek

Birth Wt	70
205 Wt	771
Scrotal	40
PAP	38

CE	BW	WW	YW	Milk	\$EN	CW	IMF	RE	Fat	\$W	\$F	\$B
+8	-0.9	+71	+128	+13	-5	+46	+0.18	+0.41	+0.023	+60	+92	+119

Moderate framed Resilient son out of a first calf heifer sired by Circle L Gus. This bull would make a great option for heifers. 3/4 brother to lots 2, 4 and 11. PAP score of 38 at 7,200 feet.



Reference  
Sire

Sitz-Resilient-10208



**4**  
Angus



**6**  
Angus

**4** Angus Bull calved: 11/26/23 tattoo: C6 reg: AAA 21131086  
Sitz Stellar 726D  
Sitz Resilient 10208  
Sitz Miss Burgess 1856



Circle L Gus						
SAR Forever Lady A3						
SAR Forever Lady Y18						
CE	BW	WW	YW	Milk	\$EN	
+0	+3.2	+87	+147	+22	-19	
CW	IMF	RE	Fat	\$W	\$F	\$B
+72	+0.62	+1.14	+0.055	+76	+119	+173

Birth Wt	81
205 Wt	843
Scrotal	38
PAP	49

Lot 4 weaned with an actual WW of over 900 lbs, adjusting to 843 lbs for a WR of 110, while being raised by a first calf heifer. 3/4 brother to lots 2, 3 and 11. Top 10% - WW, YW, RE, \$M & \$F.

**6** Angus Bull calved: 12/19/23 tattoo: C25 reg: AAA 21131090  
Sitz Stellar 726D  
Sitz Resilient 10208  
Sitz Miss Burgess 1856



Connealy Courage 25L						
SAR Barbara X3						
SAR Barbara V25						
CE	BW	WW	YW	Milk	\$EN	
+12	+0.5	+75	+123	+20	-10	
CW	IMF	RE	Fat	\$W	\$F	\$B
+46	+0.71	+0.98	+0.015	+73	+88	+147

Birth Wt	71
205 Wt	664
Scrotal	40
PAP	39

Big bodied, well balanced bull. Another great option for heifers. Excellent carcass numbers meeting CAB requirements. PAP score of 39 at 7,200 feet.



**5**  
Angus

**7** Angus Bull calved: 12/19/23 tattoo: C27 reg: AAA 21131092  
Sitz Stellar 726D  
Sitz Resilient 10208  
Sitz Miss Burgess 1856



McConnell Altitude 3114						
SAR Hallie V21						
SAR Hallie S11						
CE	BW	WW	YW	Milk	\$EN	
+2	+1.6	+78	+138	+21	-10	
CW	IMF	RE	Fat	\$W	\$F	\$B
+48	+0.48	+0.5	+0	+73	+88	+132

Birth Wt	77
205 Wt	682
Scrotal	38
PAP	50+

Long sided, attractive Resilient son. 3/4 brother to lots 1 and 8. Scored in the top 9% for WW on AngusGS test.

**5** Angus Bull calved: 12/17/23 tattoo: C22 reg: AAA 21131089  
Sitz Stellar 726D  
Sitz Resilient 10208  
Sitz Miss Burgess 1856



Musgrave Big Sky						
SAR Paisley W22						
SAR Paisley M16						
CE	BW	WW	YW	Milk	\$EN	
+4	+1.6	+81	+140	+31	-42	
CW	IMF	RE	Fat	\$W	\$F	\$B
+55	+0.56	+0.18	+0.033	+78	+91	+133

Birth Wt	80
205 Wt	749
Scrotal	40
PAP	50+

Big ribbed, burly, soggy made bull that weaned off heavy. Should produce a heavy set of feeder calves. 3/4 brother to lots 9 and 10.

**8** Angus Bull calved: 12/20/23 tattoo: C37 reg: AAA 21131091  
Sitz Stellar 726D  
Sitz Resilient 10208  
Sitz Miss Burgess 1856



McConnell Altitude 3114						
SAR Paisley Z39						
SAR Paisley P7						
CE	BW	WW	YW	Milk	\$EN	
+8	+0.3	+80	+138	+17	-27	
CW	IMF	RE	Fat	\$W	\$F	\$B
+46	+0.57	+0.33	+0.056	+68	+87	+129

Birth Wt	73
205 Wt	676
Scrotal	39
PAP	33

3/4 brother to lots 1 and 7. Long spined bull with a touch more frame. One maternal sister has been retained. Lowest Angus PAP score in the sale at 33 at 7,200 feet. He scored in the top 20% or better for 9 traits on the AngusGS genomic test.

**9**  
Angus

### SAR Resilient C51

Bull calved: 12/23/23 tattoo: C51 reg: AAA 21131093

Sitz Stellar 726D

Sitz Resilient 10208

Sitz Miss Burgess 1856

Musgrave Big Sky

SAR Forever Lady W28

SAR Forever Lady S7



**ANGUS**  
Powered by Neogen GeneSeek

Birth Wt	77
205 Wt	672
Scrotal	39
PAP	43

CE	BW	WW	YW	Milk	\$EN		
+10	-0.4	+62	+110	+38	+2		
CW	IMF	RE	Fat	\$W	\$F	\$B	
+28	+1.13	+0.56	+0.044	+79	+56	+129	

Resilient son that comes from the deep Forever Lady cow family on the bottom side. Dam has a 369 day calving interval with a BR 5@99 and WR 5@101. One maternal sister has been retained. Great carcass bull that meets CAB requirements. 3/4 brother to lots 5 and 10.

**10**  
Angus

### SAR Resilient C57

Bull calved: 12/25/23 tattoo: C57 reg: AAA 21131094

Sitz Stellar 726D

Sitz Resilient 10208

Sitz Miss Burgess 1856

Musgrave Big Sky

SAR Serena W25

SAR Serena T34

**ANGUS**  
Powered by Neogen GeneSeek

Birth Wt	83
205 Wt	683
Scrotal	41
PAP	47

CE	BW	WW	YW	Milk	\$EN		
+5	+2.3	+79	+134	+21	-20		
CW	IMF	RE	Fat	\$W	\$F	\$B	
+41	+0.59	+0.46	-0.002	+70	+79	+128	

Dam has a calving interval of 369 days and has BR 4@101 and WR 4@102. Maternal cow family. Top 20% - WW. 3/4 brother to lots 5 and 9.

**12**  
Angus

### SAR Resilient C65

Bull calved: 12/27/23 tattoo: C65 reg: AAA 21131096

Sitz Stellar 726D

Sitz Resilient 10208

Sitz Miss Burgess 1856

PVF Insight 0129

SAR Forever Lady W42

SAR Forever Lady P11

**ANGUS**  
Powered by Neogen GeneSeek

Birth Wt	84
205 Wt	670
Scrotal	38
PAP	38

CE	BW	WW	YW	Milk	\$EN		
+6	+1.3	+69	+112	+21	-19		
CW	IMF	RE	Fat	\$W	\$F	\$B	
+46	+0.39	+0.73	+0.02	+63	+88	+129	

Solid, well balanced bull with no extremes. Dam has a calving interval of 363 days and WR 3@99. Three maternal brothers have sold through the sale. PAP score 38 at 7,200 feet elevation.



Circle-L-Gus



**11**  
Angus

### SAR Resilient C60

Bull calved: 12/25/23 tattoo: C60 reg: AAA 21131095

Sitz Stellar 726D

Sitz Resilient 10208

Sitz Miss Burgess 1856

Circle L Gus

SAR Paisley Z36

SAR Paisley W7

**ANGUS**  
Powered by Neogen GeneSeek

Birth Wt	79
205 Wt	693
Scrotal	38
PAP	38

CE	BW	WW	YW	Milk	\$EN		
+7	+2.3	+88	+136	+26	-2		
CW	IMF	RE	Fat	\$W	\$F	\$B	
+69	+0.43	+0.56	+0.039	+93	+113	+153	

Big ribbed bull that is packed full of muscle. 3/4 brother to lots 2-4. Backed by 6 generations of top AI sires. Top 1% - \$M, \$W, 10% - WW. PAP score 38 at 7,200 feet elevation.

**13**  
Angus

### SAR Gus C2

Bull calved: 11/25/23 tattoo: C2 reg: AAA 21131069

S Chisum 6175

Circle L Gus

Circle L PRIDE X097

McConnell Altitude 3114

SAR Paisley A20

SAR Paisley P7

**ANGUS**  
Powered by Neogen GeneSeek

Birth Wt	75
205 Wt	754
Scrotal	42
PAP	43

CE	BW	WW	YW	Milk	\$EN		
+13	-2	+57	+100	+23	+9		
CW	IMF	RE	Fat	\$W	\$F	\$B	
+45	+0.45	+0.4	+0.087	+63	+93	+128	

Calving ease deluxe! Moderate framed, level topped, and clean fronted bull out of a first calf heifer.



**14** Angus Bull calved: 11/25/23 tattoo: C3 reg: AAA 21131070  
S Chisum 6175

**Circle L Gus**  
Circle L PRIDE X097

Sitz Stellar 726D

**SAR Polly A19**  
SAR Polly X27

CE	BW	WW	YW	Milk	\$EN	Scrotal	PAP
+7	+1.5	+77	+138	+21	-20	38	41
CW	IMF	RE	Fat	\$W	\$F	\$B	
+61	+0.18	+0.78	+0.016	+68	+101	+133	

**ANGUSGS**  
Powered by Noogen GeneSeek

Birth Wt	79
205 Wt	761
Scrotal	38
PAP	41

Moderate framed, deep sided bull that is out of a first calf heifer. A good option for heifers that should make the easy keeping kind. 3/4 brother to lot 15.

**17** Angus Bull calved: 12/23/23 tattoo: C52 reg: AAA 21131073  
S Chisum 6175

**Circle L Gus**  
Circle L PRIDE X097

K C F Bennett Absolute

**SAR Forever Lady U7**  
SAR Forever Lady J55

CE	BW	WW	YW	Milk	\$EN	Scrotal	PAP
+10	-0.5	+68	+113	+21	-12	38	42
CW	IMF	RE	Fat	\$W	\$F	\$B	
+51	+0.34	+0.86	+0.034	+66	+97	+136	

**ANGUSGS**  
Powered by Noogen GeneSeek

Birth Wt	81
205 Wt	612
Scrotal	38
PAP	42

Very nice Gus son that shows great breed character. Very attractive from the profile and well balanced throughout. Dam records BR 6@101, WR 6@101.

**15** Angus Bull calved: 11/25/23 tattoo: C5 reg: AAA 21131071  
S Chisum 6175

**Circle L Gus**  
Circle L PRIDE X097

Sitz Stellar 726D

**SAR Laney A10**  
Rafters 1 Laney Freedom

CE	BW	WW	YW	Milk	\$EN	Scrotal	PAP
+6	-0.6	+61	+112	+24	-5	39	50+
CW	IMF	RE	Fat	\$W	\$F	\$B	
+50	+0.53	-0.12	+0.113	+61	+96	+126	

**ANGUSGS**  
Powered by Noogen GeneSeek

Birth Wt	73
205 Wt	699
Scrotal	39
PAP	50+

Another easy fleshing bull out of a first calf heifer. Would make a great option for heifers. 3/4 brother to lot 14.

**18** Angus Bull calved: 12/25/23 tattoo: C56 reg: AAA 21131074  
S Chisum 6175

**Circle L Gus**  
Circle L PRIDE X097

Connealy Final Product

**SAR Forever Lady Z25**  
Riverbend Forever Lady R106

CE	BW	WW	YW	Milk	\$EN	Scrotal	PAP
+1	+1.4	+70	+123	+23	+1	36	47
CW	IMF	RE	Fat	\$W	\$F	\$B	
+60	+0.96	-0.47	+0.093	+70	+106	+166	



**ANGUSGS**  
Powered by Noogen GeneSeek

Birth Wt	82
205 Wt	634
Scrotal	36
PAP	47

Dam was produced from the last embryo out of our foundation Riverbend Forever Lady R106 donor. Our entire Forever Lady cow family that is represented by many cows at SAR stems from this donor. Meets CAB carcass requirements. Top 30% for marbling.

**16** Angus Bull calved: 12/23/23 tattoo: C48 reg: AAA 21131072  
S Chisum 6175

**Circle L Gus**  
Circle L PRIDE X097

Connealy Impression

**Spruce Mtn Emblynette 2134**  
S A V Emblynette 9200

CE	BW	WW	YW	Milk	\$EN	Scrotal	PAP
+1	+2.3	+75	+120	+24	-24	38	50+
CW	IMF	RE	Fat	\$W	\$F	\$B	
+57	+0.24	+0.73	+0.014	+69	+98	+132	

**ANGUSGS**  
Powered by Noogen GeneSeek

Birth Wt	88
205 Wt	718
Scrotal	38
PAP	50+

Growthy, good footed, clean sheathed bull out of a dam that was bred right out of the Schaff Angus Valley program.



**19**  
Angus

**SAR Dignity C17**

Bull calved: 12/16/23 tattoo: C17 reg: AAA 21131080

Sitz Resilient 10208

SITZ Dignity 599J

SITZ Barbaramere Nell 53F

**OUT OF SALE**

Powered by Neogen GeneSeek

Birth Wt	70
205 Wt	714
Scrotal	
PAP	39

	CE	BW	WW	YW	Milk	\$EN		
	+11	-1	+55	+91	+26	+7		
	CW	IMF	RE	Fat	\$W	\$F	\$B	
	+14	+0.6	+0.35	+0.014	+64	+41	+88	

Sitz Dignity is a new sire group at SAR, whose donor dam also produced Sitz Incentive. PAP score of 39 at 7,200 feet.



**21**  
Angus

**20**  
Angus

**SAR Dignity C32**

Bull calved: 12/20/23 tattoo: C32 reg: AAA 21131081

Sitz Resilient 10208

SITZ Dignity 599J

SITZ Barbaramere Nell 53F

S A V Rainfall 6846

SAR Jacey X40

SAR Jacey S20

**ANGUS**  
Powered by Neogen GeneSeek

Birth Wt	81
205 Wt	619
Scrotal	
PAP	50+

	CE	BW	WW	YW	Milk	\$EN		
	+11	-1.2	+60	+107	+35	-7		
	CW	IMF	RE	Fat	\$W	\$F	\$B	
	+46	+0.6	+0.86	+0.021	+73	+91	+143	

This Dignity x Rainfall cross is a great calving ease option. Lot 20's dam is a picture perfect, model cow who is a maternal sister to the dam of lot 1. Maternally bred.

**21**  
Angus

**SAR Dignity C53**

Bull calved: 12/24/23 tattoo: C53 reg: AAA 21131082

Sitz Resilient 10208

SITZ Dignity 599J

SITZ Barbaramere Nell 53F

Musgrave Sky High 1535

SAR Paisley Z29

SAR Paisley U27



**ANGUS**  
Powered by Neogen GeneSeek

Birth Wt	87
205 Wt	687
Scrotal	
PAP	40

	CE	BW	WW	YW	Milk	\$EN		
	+8	+1	+64	+116	+27	-8		
	CW	IMF	RE	Fat	\$W	\$F	\$B	
	+47	+0.69	+1.3	+0.001	+65	+95	+158	

Super attractive Dignity son that is well balanced. Meets CAB requirements. His dam is a promising young cow that is going to make an impact. Lot 21 is long spined, deep ribbed and possesses good muscle.



*Reference Sire*

**SITZ-Dignity-599J**



*Reference Sire*

**SITZ-Incentive-704H**



When you need it, you need it.  
Animal Health International.



Your needs. Your solution. Your peace of mind.  
**It's what we do best.**

Animal Health International, Inc. is the premier animal health company in North America serving the needs of customers for more than 40 years. No other distributor has a broader product offering. We represent over 1,000 manufacturers that supply products focused on companion animal, equine, beef and dairy cattle, poultry, and swine. Animal Health International has more than 400 sales personnel nationwide, and offers products ranging from vaccines and pharmaceuticals to state of the art equipment and software.

To find out more information about our products and services, please contact your local sales representative or visit us at [www.animalhealthinternational.com](http://www.animalhealthinternational.com).



[animalhealthinternational.com](http://animalhealthinternational.com) | 800-854-7664



**22**  
Angus



**23**  
Angus

**22** **SAR Incentive C20**  
Angus Bull calved: 12/17/23 tattoo: C20 reg: AAA 21131083  
Sitz Stellar 726D

**SITZ Incentive 704H**  
SITZ Barbaramere Nell 53F

SAR Confidence T8  
**SAR Forever Lady W86**  
SAR Forever Lady P2



CE	BW	WW	YW	Milk	\$EN	\$B
<b>+8</b>	<b>+0.1</b>	<b>+73</b>	<b>+136</b>	<b>+33</b>	<b>-27</b>	
CW	IMF	RE	Fat	\$W	\$F	\$B
<b>+58</b>	<b>+0.41</b>	<b>+0.77</b>	<b>+0.061</b>	<b>+75</b>	<b>+107</b>	<b>+146</b>

Lot 22 is a dense made, heavy muscled, moderate framed bull that stands on good bone. He is sired by Sitz Incentive who sold for \$235,000 by Sitz Angus in 2021. His dam is sired by a Confidence son that we sold as the high selling Angus bull in the 2016 Quest of the West Sale. Good calving ease option.

**23** **SAR Incentive C49**  
Angus Bull calved: 12/23/23 tattoo: C49 reg: AAA 21131084  
Sitz Stellar 726D

**SITZ Incentive 704H**  
SITZ Barbaramere Nell 53F

Connealy Confidence 0100  
**SAR Hallie T6**  
SAR Hallie R2



CE	BW	WW	YW	Milk	\$EN	\$B
<b>+14</b>	<b>-2.7</b>	<b>+67</b>	<b>+110</b>	<b>+29</b>	<b>-12</b>	
CW	IMF	RE	Fat	\$W	\$F	\$B
<b>+50</b>	<b>+0.63</b>	<b>+0.65</b>	<b>+0.083</b>	<b>+77</b>	<b>+96</b>	<b>+143</b>

Another Incentive son out of a 11 year old Confidence dam. Similar pedigree to lot 22, but with even more calving ease.

**24**  
Angus

### SAR Stellar C46

Bull calved: 12/22/23 tattoo: C46 reg: AAA 21131097

Mohnen Substantial 272

Sitz Stellar 726D

SITZ Pride 200B

KM Broken Bow 002

SAR Paisley X22

SAR Paisley U27

**ANGUS**  
Powered by Neogen GeneSeek

Birth Wt	<b>78</b>
205 Wt	<b>656</b>
Scrotal	<b>38</b>
PAP	<b>40</b>

CE	BW	WW	YW	Milk	\$EN		
<b>+7</b>	<b>-0.3</b>	<b>+62</b>	<b>+95</b>	<b>+17</b>	<b>+2</b>		
CW	IMF	RE	Fat	\$W	\$F	\$B	
<b>+25</b>	<b>+0.76</b>	<b>+0.17</b>	<b>+0.031</b>	<b>+61</b>	<b>+60</b>	<b>+111</b>	



Sitz Stellar 726D

**25**  
Angus

### SAR Executive Decision C58

Bull calved: 12/25/23 tattoo: C58 reg: AAA 21131075

Bar-E-L Natural Law 52Y

PM Executive Decision 5'17

PM Blossom 124'13

TC Freedom 104

SAR Paisley P7

SAR Lady by Design J12

**ANGUS**  
Powered by Neogen GeneSeek

Birth Wt	<b>81</b>
205 Wt	<b>671</b>
Scrotal	<b>35</b>
PAP	<b>50+</b>

CE	BW	WW	YW	Milk	\$EN		
<b>+6</b>	<b>+2.3</b>	<b>+56</b>	<b>+98</b>	<b>+35</b>	<b>-8</b>		
CW	IMF	RE	Fat	\$W	\$F	\$B	
<b>+42</b>	<b>+0.44</b>	<b>+1.05</b>	<b>-0.014</b>	<b>+61</b>	<b>+79</b>	<b>+129</b>	

Dam is another older cow that has done a great job here. She has a calving interval of 368 days while having BR 10@101, WR 10@100. 5 daughters have been retained, including the dams of lots 8, 18 and 33.



27  
Angus

**26**  
Angus

### SAR Executive Decision C67

Bull calved: 12/30/23 tattoo: C67 reg: AAA 21131076

Bar-E-L Natural Law 52Y

PM Executive Decision 5'17

PM Blossom 124'13

Sankeys Lazer 609 of 6N

SAR Sage N16

SAR Miss In Focus J24

**ANGUS**  
Powered by Neogen GeneSeek

Birth Wt	<b>85</b>
205 Wt	<b>652</b>
Scrotal	<b>41</b>
PAP	<b>40</b>

CE	BW	WW	YW	Milk	\$EN		
<b>+4</b>	<b>+2.7</b>	<b>+59</b>	<b>+96</b>	<b>+21</b>	<b>+10</b>		
CW	IMF	RE	Fat	\$W	\$F	\$B	
<b>+45</b>	<b>+0.52</b>	<b>+0.4</b>	<b>+0.007</b>	<b>+55</b>	<b>+89</b>	<b>+133</b>	

The dam of lot 26 is the oldest cow on the place at 14 years old. She earned her place by producing calves like this one. Deep sided and thick made with a good topline. He gives you a great profile. Dam Production: BR 10@100, WR 10@100.

**27**  
Angus

### SAR Logo C76

Bull calved: 01/16/24 tattoo: C76 reg: AAA 21168328

Sitz Logo 8148

Sitz Logo 539K

Sitz Epponia 223C

Sitz Substantial 9106

SAR Miss Emulous Y62

SAR Miss Emulous R48

**ANGUS**  
Powered by Neogen GeneSeek

Birth Wt	<b>82</b>
205 Wt	<b>704</b>
Scrotal	<b>42</b>
PAP	<b>46</b>

CE	BW	WW	YW	Milk	\$EN		
<b>+2</b>	<b>+1.8</b>	<b>+75</b>	<b>+128</b>	<b>+37</b>	<b>-33</b>		
CW	IMF	RE	Fat	\$W	\$F	\$B	
<b>+67</b>	<b>+0.72</b>	<b>+0.34</b>	<b>+0.065</b>	<b>+79</b>	<b>+107</b>	<b>+156</b>	

Lot 27 is the only bull in the sale out of our newest herd sire from Sitz Angus, sired by Sitz Logo 8148. Cattlemen will appreciate how this bull is put together. He's built right from the ground up. Top 15% - \$W, 25% - \$F.



PM-Executive-Decision-5'17

**Mountain View Wholesale LLC**



**Thor Grasteit**  
Manager / Owner

(801) 380-6636 cell  
(435) 427-9116 fax  
thor.grasteit@gmail.com  
P.O. Box 415  
Fairview, UT 84629

# Glossary of Terms

**IT IS IMPORTANT TO REMEMBER NOT TO COMPARE EPDS FROM BREED TO BREED!**

**EPDs** (*Expected Progeny Difference*): EPDs are a statistical measurement of a bull's ability to transmit certain traits to his offspring based on his dams, sires and own production & performance record, as well as his own progeny's record when data is submitted. EPDs allow for the evaluation of cattle of the same breed from ranch to ranch with out concern for differences in environment, nutrition and management. **IT IS IMPORTANT TO REMEMBER NOT TO COMPARE EPDS FROM BREED TO BREED!** The following are descriptions of the EPDs used in this catalog.

**CED**: Calving Ease Direct is expressed as a difference in percentage of unassisted births with a higher value indicating greater calving ease in first-calf heifers.

**BW**: Expressed in pounds, is a predictor of a sire's ability to transmit BW to his progeny compared to that of other sires. The lower the EPD, the lighter the BW on average.

**WW**: Expressed in pounds, is a predictor of a sire's ability to transmit growth to weaning in his progeny compared to that of other sires. The higher the EPD, the heavier the WW on average.

**YW**: Expressed in pounds, is a predictor of a sire's ability to transmit growth to yearling in his progeny compared to that of other sires.

**Milk**: A predictor of a sire's genetic merit for milk & mothering ability transmitted to his daughters.

**%IMF**: A predictor of a sire's progeny for % intramuscular fat (marbling) in the rib eye compared to other sires.

**RE**: A predictor of the difference in square inches of ultrasound rib eye area of a sire's progeny compared to the progeny of other sires.

**FAT**: A predictor of the difference in ultrasound fat thickness at the 12th rib of a sire's progeny compared to the progeny of other sires.

**CW**: (*Sim*) A predictor of the difference in carcass wt. of a sire's progeny compared to the progeny of other sires.

**YG**: (*Sim*) A predictor of the difference in Yield Grade of a sire's progeny compare to the progeny of other sires. Like actual Yield Grade itself, the lower the number the better.

**\$W**: (*Angus*) Weaned Calf Dollar Value EPD quantifies four primary economic impact areas (BW, WW, Maternal Milk, & Mature Cow Size) and combined into an economic value expressed in dollars per head.

**\$F**: (*Angus*) Feedlot Value, an index value expressed in \$/hd & is the expected average difference in future progeny performance for post weaning merit compared to progeny of other sires.

**\$G**: (*Angus*) Grid Value, an index expressed in \$/hd & is the expected average difference in future progeny performance for carcass grid merit.

**\$B**: (*Angus*) Beef Value, a simultaneous multi-trait genetic selection for feedlot & carcass merit, & predicts the average \$/hd difference in the progeny's post weaning performance & carcass value compared to progeny of other sires.

**YG**: (*GV*) Differences in yield grade score, which is a predictor of percent retail product. Smaller values suggest that progeny will have a better lean to fat ratio.

**CW**: (*GV*) Differences in pounds of hot carcass weight, adjusted to an industry standard age endpoint.

**REA**: (*GV*) Differences in ribeye area in inches between the 12th and 13th rib. Greater ribeye areas are preferable.

**MB**: (*GV*) Predicts the differences in the degree of marbling within the ribeye as expressed in marbling score units. Greater marbling numbers are preferable and are an indicator of higher carcass quality grades.

**FT**: (*GV*) Differences for fat thickness, in inches, for a carcass over the 12th rib, smaller numbers of fat thickness are preferable as excess fat can be detrimental to yield grade.



**28** Bull calved: 12/21/23 tattoo: C41 reg: AAA 21131078  
 Angus Sitz Alpine 11076  
 Sitz Alpine 12109  
 Sitz Pride 2347  
 TEX Playbook 5437  
 SAR Polly X27  
 SAR Polly N13

CE	BW	WW	YW	Milk	\$EN	
+7	+0.4	+66	+113	+23	-4	
CW	IMF	RE	Fat	\$W	\$F	\$B
+46	+0.97	+0.58	-0.026	+67	+91	+161

Birth Wt	71
205 Wt	680
Scrotal	41
PAP	50+

**29** Bull calved: 01/10/24 tattoo: C73 reg: AAA 21168326  
 Angus Sitz Alpine 11076  
 Sitz Alpine 12109  
 Sitz Pride 2347  
 Connealy Black Granite  
 SAR Sage X1  
 SAR Sage V43

CE	BW	WW	YW	Milk	\$EN	
+8	+1.5	+84	+138	+10	-21	
CW	IMF	RE	Fat	\$W	\$F	\$B
+60	+0.1	+0.49	+0.037	+64	+102	+125

Birth Wt	75
205 Wt	667
Scrotal	42
PAP	42

*Soggy* made bull out of one of our herd sires, Sitz Alpine 12109, who still looked great and had awesome feet and legs at nearly 6 years of age. Excellent calving ease and carcass traits. Meets CAB requirements.

The Sitz Alpine sons are phenotypic standouts. This one fits that mold. Good calving ease. Top 10% - WW. Check him out on sale day.

**30**  
Angus

### SAR Alpine C75

Bull calved: 01/15/24 tattoo: C75 reg: AAA 21168320

Sitz Alpine 11076

Sitz Alpine 12109

Sitz Pride 2347

TC Freedom 104

SAR Forever Lady P2

Riverbend Forever Lady R106

**ANGUS**  
Powered by Neogen GeneSeek

Birth Wt	81
205 Wt	729
Scrotal	41
PAP	50+

CE	BW	WW	YW	Milk	\$EN			
+6	+1.5	+72	+124	+24	-17			
CW	IMF	RE	Fat	\$W	\$F	\$B		
+40	+0.45	+0.66	+0.013	+68	+67	+110		

Lot 30's dam has stood the test of time. Four daughters have been retained. Dam has maintained a 369 day calving interval, with BR 10@102 and WR 10@105. This bull has a balanced set of EPD's and could work in a lot of area.



**33**  
Angus

### SAR Alpine C90

Bull calved: 02/10/24 tattoo: C90 reg: AAA 21168322

Sitz Alpine 11076

Sitz Alpine 12109

Sitz Pride 2347

Connealy Courage 25L

SAR Paisley U27

SAR Paisley P7

**ANGUS**  
Powered by Neogen GeneSeek

Birth Wt	79
205 Wt	666
Scrotal	37
PAP	42

CE	BW	WW	YW	Milk	\$EN			
+10	+1.3	+66	+105	+24	-2			
CW	IMF	RE	Fat	\$W	\$F	\$B		
+51	+0.55	+0.94	+0.044	+69	+96	+145		

Lot 33 would be a great option for heifers. Smooth shouldered, level top, and good on his feet and legs. Top 25% - RE.



**31**  
Angus

### SAR Alpine C78

Bull calved: 01/17/24 tattoo: C78 reg: AAA 21168323

Sitz Alpine 11076

Sitz Alpine 12109

Sitz Pride 2347

McConnell Altitude 3114

SAR Hallie V14

SAR Hallie M6

**ANGUS**  
Powered by Neogen GeneSeek

Birth Wt	76
205 Wt	631
Scrotal	38
PAP	47

CE	BW	WW	YW	Milk	\$EN			
+7	+0.9	+65	+109	+15	+6			
CW	IMF	RE	Fat	\$W	\$F	\$B		
+40	+0.3	+0.43	+0.056	+59	+79	+110		

C78 has been a phenotypic standout all winter. He's another bull that is not extreme in any area, just a solid all around bull.

**32**  
Angus

### SAR Alpine C79

Bull calved: 01/17/24 tattoo: C79 reg: AAA 21168327

Sitz Alpine 11076

Sitz Alpine 12109

Sitz Pride 2347

Connealy Black Granite

SAR Queen Blackcap Y35

SAR Queen Blackcap U76



**ANGUS**  
Powered by Neogen GeneSeek

Birth Wt	86
205 Wt	672
Scrotal	40
PAP	43

CE	BW	WW	YW	Milk	\$EN			
+4	+2.6	+82	+137	+30	-37			
CW	IMF	RE	Fat	\$W	\$F	\$B		
+75	+0.74	+1.14	+0.007	+77	+125	+188		

Lot 32's dam is a beautiful Connealy Black Granite daughter. His granddam is the same and is currently in the donor pen at SAR. This bull is big bodied and has good thickness and muscle. Excellent carcass traits, meeting CAB requirements. Top 10% - WW & RE.

**34**  
Angus

### SAR Alpine C91

Bull calved: 02/29/24 tattoo: C91 reg: AAA 21131079

Sitz Alpine 11076

Sitz Alpine 12109

Sitz Pride 2347

SAR V Rainfall 6846

SAR Queen Blackcap X38

SAR Queen Blackcap U76



**ANGUS**  
Powered by Neogen GeneSeek

Birth Wt	79
205 Wt	692
Scrotal	38
PAP	39

CE	BW	WW	YW	Milk	\$EN			
+4	+2.3	+82	+132	+18	-14			
CW	IMF	RE	Fat	\$W	\$F	\$B		
+59	+0.78	+0.49	+0.038	+72	+102	+158		

This bull is 2+ months younger than most of the Angus bulls in the sale. He'll grow up just like the rest of them. He has quite a bit to offer. Meets CAB requirements. Top 15% - WW. PAP score of 39 at 7,200 feet.



# Balancer Bulls



**35** Bull calved: 1/2/2024 tattoo: 220M reg: AMGV1614176  
Balancer S A V RAINFALL 6846  
DBRG MR MOUNTAIN RAIN 1095J  
DBRG MS OUTLOOK 468B

CTR CTR ELEVATION 6628D						Birth Wt	72
JTOL 220HELEV022A PAP36 87VUC3330						205 Wt	653
JTOL 022 301NBIA ET						Scrotal	37
CEW	BW	WW	YW	Milk	CEM	PAP	32
+13.6	-0.2	+70	+108	+26	+8		
CW	CREA	MARB	STAY	YG	FPI		
+24	+0.29	+0.24	+15.1	-0.02	+77.54		

BA49.2 • Black • Polled  
220M-MTN Rain-(GE-EPDs)-Most of the Loveless Bulls have been GENOMIC TESTED-  
Others are pending (GE-EPDs)-Moderate, deep ribbed with a lot of thickness. Eye  
appeal with good bone and feet. Excellent cow family.

**36** Bull calved: 1/3/2024 tattoo: 1158M reg: AMGV1614209  
Balancer S A V RAINFALL 6846  
DBRG MR MOUNTAIN RAIN 1095J  
DBRG MS OUTLOOK 468B

EGL EGL LIFELINE B101						Birth Wt	83
JTOL LOVELESS 158CLINE						205 Wt	635
JTOL 1158C 58X SH						Scrotal	40
CEW	BW	WW	YW	Milk	CEM	PAP	39
+12.7	-0.1	+76	+124	+23	+6		
CW	CREA	MARB	STAY	YG	FPI		
+42	+0.6	+0.36	+11.4	-0.05	+83.74		

BA53 • Black • Polled  
1158M-MTN Rain-(GE-EPDs) A performance bull with numbers to back it up.  
Good carcass and intake value. Great maternal.



**37** Bull calved: 1/13/2024 tattoo: 32HM reg: AMGV1614182  
Balancer S A V RAINFALL 6846  
DBRG MR MOUNTAIN RAIN 1095J  
DBRG MS OUTLOOK 468B

CTR CTR ELEVATION 6628D						Birth Wt	81
JTOL 32H ELV30B PAP38 87VUC3347						205 Wt	641
JTOL LOVELESS 30B ABS						Scrotal	39
CEW	BW	WW	YW	Milk	CEM	PAP	32
+11.6	+0.2	+66	+99	+25	+7		
CW	CREA	MARB	STAY	YG	FPI		
+29	+0.18	+0.46	+14.4	+0	+78.8		

BA48.8 • Black • Polled  
32M-MTN Rain-(GE-EPDs)-Thickness, muscle, stoutness and structure with a lot of  
bone and great feet. Ranks in the top 3/4 on marbling.

**38** Bull calved: 1/5/2024 tattoo: 18M reg: AMGV1615036  
Balancer S A V RAINFALL 6846  
DBRG MR MOUNTAIN RAIN 1095J  
DBRG MS OUTLOOK 468B

JBOB CAROLINA FORTUNE 2564JET						Birth Wt	84
JTOL LOVELESS CAROLINE						205 Wt	647
JTOL LOVELESS PRECISION						Scrotal	38
CEW	BW	WW	YW	Milk	CEM	PAP	39
+9.7	+0.5	+72	+116	+25	+6		
CW	CREA	MARB	STAY	YG	FPI		
+26	+0.38	+0.29	+9.1	-0.05	+78.19		

BA62.5 • Black • Polled  
18M-MTN Rain-(GE-EPDs)-A powerfully constructed bull with a big top, square hip  
and deep down the middle. Very three dimensional. Will add pounds and longevity.

**39** Bull calved: 1/27/2024 tattoo: 603GM reg: AMGV1614197  
Balancer S A V RAINFALL 6846  
DBRG MR MOUNTAIN RAIN 1095J  
DBRG MS OUTLOOK 468B

JKGF DITKA C85						Birth Wt	85
JTOL LOVE 301G602D DITKA PAP42						205 Wt	614
JTOL 602 D 301 BLACK IMPACT ET						Scrotal	36
CEW	BW	WW	YW	Milk	CEM	PAP	39
+11.1	-0.1	+77	+119	+26	+7		
CW	CREA	MARB	STAY	YG	FPI		
+32	+0.33	+0.23	+13.8	+0	+80.37		

BA50 • Black • Polled  
603M-MTN Rain-(GE-EPDs)-Well balanced, smooth fronted and loaded with  
muscle, volume and depth of rib. Great cow family with good bone and feet.



**40****JTOL OL TOP 058**

Balancer

Bull calved: 2/11/24 tattoo: 058M reg: AMGV1614163

EGL GAME CHANGER D136

**BGGR TOP GUN J011**

BGGR BLACK GOLD SANDHILLS 7250E ET

BGGR MR FRONT PAGE 114W

**MUNCH 1158 FP P37**

LIFE LINE B101

CED	BW	WW	YW	Milk	CEM	Birth Wt
<b>+13</b>	<b>-0.2</b>	<b>+80</b>	<b>+123</b>	<b>+21</b>	<b>+7</b>	<b>79</b>
						205 Wt <b>601</b>
						Scrotal <b>34</b>
						PAP <b>32</b>
CW	CREA	MARB	STAY	YG	FPI	
<b>+36</b>	<b>+0.42</b>	<b>+0.63</b>	<b>+14</b>	<b>+0</b>	<b>+92.21</b>	

PC43.5 • Black • Polled

058M TOPO GUN- (GE-EPDs)-Moderate framed with power, thickness, deep ribbed all making him structurally sound with eye appeal. A younger bull with lots of potential.

**43**  
Balancer**41****JTOL OLRETURN 03**

Balancer

Bull calved: 1/27/2024 tattoo: 03YM reg: AMGV1614162

S A V RAINFALL 6846

**DBRG MR MOUNTAIN RAIN 1095J**

DBRG MS OUTLOOK 468B

CONNEALY INDUSTRY 5634

**JTOL 0301Y LOVELESS INDUSTRY**

JTOL WHAT A WONDER

CED	BW	WW	YW	Milk	CEM	Birth Wt
<b>+12.1</b>	<b>+0.3</b>	<b>+70</b>	<b>+109</b>	<b>+23</b>	<b>+7</b>	<b>87</b>
						205 Wt <b>614</b>
						Scrotal <b>36</b>
						PAP <b>32</b>
CW	CREA	MARB	STAY	YG	FPI	
<b>+34</b>	<b>+0.45</b>	<b>+0.22</b>	<b>+16.5</b>	<b>-0.03</b>	<b>+75.48</b>	

BA48.4375 • Black • Polled

03M-MTN Rain-(GE-EPDs)-Moderate framed bull. Sound mover with great feet and legs. Maternal line is a plus.

**42**  
Balancer**43****JTOL OL BANDITO 36**

Balancer

Bull calved: 1/18/2024 tattoo: 36EM reg: AMGV1614183

JRI GENERAL PATTON 213B97 ET

**JRI BANDITO 253H32**

JRI MISS ME 253Z22

DLW RED POWER 583U

**JTOL 36XE RP**

JTOL LOVELESS OLD SCHOOL

CED	BW	WW	YW	Milk	CEM	Birth Wt
<b>+17</b>	<b>-3.6</b>	<b>+66</b>	<b>+104</b>	<b>+23</b>	<b>+8</b>	<b>70</b>
						205 Wt <b>615</b>
						Scrotal <b>38</b>
						PAP <b>42</b>
CW	CREA	MARB	STAY	YG	FPI	
<b>+30</b>	<b>+0.22</b>	<b>+0.3</b>	<b>+13.1</b>	<b>-0.01</b>	<b>+81.36</b>	

BA68.8 • Black • Polled

36M-Bandito- Red-(GE-EPDs)-Recommended for heifers. Ranks in the top 10% CED and BW. Exhibits eye appeal, individual performance and soundness.

Reference  
Sire**JRI-BANDITO-253H32****42****JTOL OL GAME CHANGE 320**

Balancer

Bull calved: 1/1/2024 tattoo: 320M reg: AMGV1614188

KCF BENNETT Y6

**EGL GAME CHANGER D136**

EGL EVELYNN U426

CTR GOOD NIGHT 715T

**CTR TINA 320A**

CTR CTR TINA 1439Y

CED	BW	WW	YW	Milk	CEM	Birth Wt
<b>+12.1</b>	<b>-2.5</b>	<b>+60</b>	<b>+91</b>	<b>+22</b>	<b>+8</b>	<b>84</b>
						205 Wt <b>675</b>
						Scrotal <b>41 1/2</b>
						PAP <b>36</b>
CW	CREA	MARB	STAY	YG	FPI	
<b>+36</b>	<b>+0.28</b>	<b>+0.6</b>	<b>+7.6</b>	<b>+0.07</b>	<b>+81.69</b>	

BA43.4 • Black • Polled

320M-Game Changer-(GE-EPDs)-Explosive performance and dominating phenotype with massive width, depth and volume. Conveys herd making ability and highly maternal. Ranks in the top 15% marbling.

Reference  
Sire**EGL-GAME-CHANGER-D136**

**44****JTOL OL BANDITO 65**

Balancer

Bull calved: 1/25/2024 tattoo: 65M reg: AMGV1614210

JRI GENERAL PATTON 213B97 ET

JRI BANDITO 253H32

JRI MISS ME 253Z22

RWG EXACT COMBINATION 7409

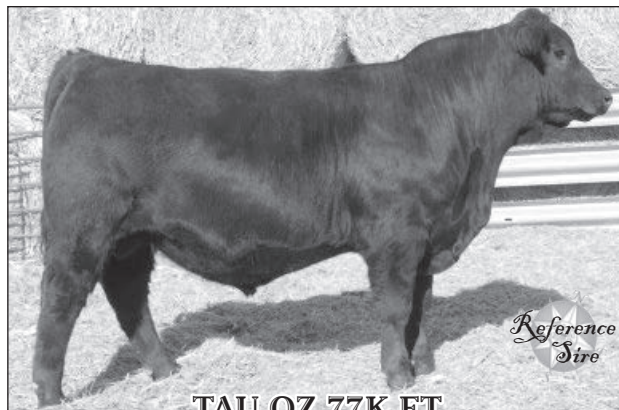
PHG HOT GOSSIP H65

DDGR DDGR KELLY 64C

CED	BW	WW	YW	Milk	CEM	Birth Wt
+10.4	+1.7	+82	+124	+25	+4	84
						205 Wt
						619
						Scrotal
						38
						PAP
						35
CW	CREA	MARB	STAY	YG	FPI	
+42	+0.46	+0.06	+15.6	-0.07	+77.13	

PB87.5 • Red • Polled (Homo - P)

65M Bandito-Red-(GE-EPDs)-A real stand out, extreme power, thickness and dimension. Big footed with great bone and legs. Ranks in the top 20% WW and YW.

**TAU OZ 77K ET****45****JTOL OL FIRE BALL 107K**

Balancer

Bull calved: 1/4/2024 tattoo: K107M reg: AMGV1614211

G A R SURE FIRE 6404

GB FIREBALL 672

GB ANTICIPATION 432

RWG EXACT COMBINATION 7409

PHG KATY K107

PHG PRAIRIE SWEET HEART E36

CED	BW	WW	YW	Milk	CEM	Birth Wt
+11	-0.1	+80	+119	+21	+9	77
						205 Wt
						636
						Scrotal
						37
						PAP
						37
CW	CREA	MARB	STAY	YG	FPI	
+70	+1.01	+0.67	+11.9	-0.06	+92.74	

BA50 • Black • Polled (Homo - P)

107M-Fireball-(GE-EPDs)-Carcass bull ranks top 1% CW and CREA. Top 10% Marbling. A performance bull from weaning to hanging will put his values in your replacements.

**46**  
Balancer**47****JTOL OL RETURN 16A**

Balancer

Bull calved: 1/27/2024 tattoo: 16AM reg: AMGV1614206

CONNEALY EMERALD

TAU OZ 77K ET

TAU MS SAMMY 385A

CONNEALY INDUSTRY 5634

JTOL LOVE116U A16

JTOL LOVELESS CAROL

CED	BW	WW	YW	Milk	CEM	Birth Wt
+9.7	+1.3	+74	+119	+21	+5	85
						205 Wt
						637
						Scrotal
						38
						PAP
						32
CW	CREA	MARB	STAY	YG	FPI	
+35	+0.7	+0.42	+17.1	-0.14	+81.84	

BA43.75 • Black • Polled

16M-OZ-(GE-EPDs)-Ranks above average in carcass and growth. Attractive patterned and super sound structured. Great cow family.

**48**  
Balancer**46****JTOL OL OZ 2605**

Balancer

Bull calved: 1/28/2024 tattoo: 2605M reg: AMGV1614193

CONNEALY EMERALD

TAU OZ 77K ET

TAU MS SAMMY 385A

JRI PROBITY 254D28

JTOL 51627F ET

CTR POLL STAR 5160E

CED	BW	WW	YW	Milk	CEM	Birth Wt
+13.3	-0.6	+72	+110	+24	+7	90
						205 Wt
						628
						Scrotal
						37
						PAP
						36
CW	CREA	MARB	STAY	YG	FPI	
+30	+0.45	+0.37	+17.3	-0.04	+82.12	

BA50 • Black • Polled

2605M-OZ-(GE-EPDs)-Trouble free cattle with moderation throughout. Good numbers that will add balance and eye appeal to his offspring.

**48****JTOL OL OZ 1125**

Balancer

Bull calved: 1/24/2024 tattoo: 1125BM reg: AMGV1614165

CONNEALY EMERALD

TAU OZ 77K ET

TAU MS SAMMY 385A

VRT LAZY TV WATCHMAN W021

JTOL LOVELESS125BZ ABS

JTOL 125Z

CED	BW	WW	YW	Milk	CEM	Birth Wt
+9.7	+1.6	+72	+107	+22	+4	88
						205 Wt
						634
						Scrotal
						38
						PAP
						34
CW	CREA	MARB	STAY	YG	FPI	
+50	+0.72	+0.34	+14.4	-0.08	+77.19	

BA46.9 • Black • Polled

1125M-OZ-(GE-EPDs)-He is complete, well balanced, smooth fronted and loaded with muscle. Great feet and legs.



**49** **JTOL OL PAY WAY 15**  
Balancer Bull calved: 1/1/2024 tattoo: 15KM reg: AMGV1614171

BASIN PAYWEIGHT 1682  
DBRG MR PAYWEIGHT 710E  
DBRG MS HILLEX102 584C ET

OGSG OVER FOR JUSTICE 217F  
JTOL 15K JUSTICE P 39  
JTOL 51H PL051C PAP39 87VUC3331

CED	BW	WW	YW	Milk	CEM	Birth Wt	63
+20.6	-5.1	+68	+100	+24	+11	205 Wt	644
						Scrotal	36
						PAP	37
CW	CREA	MARB	STAY	YG	FPI		
+45	+0.26	+0.43	+17.9	+0.14	+87.49		

BA48.9 • Black • Polled  
15M-Mr. Payweight-(GE-EPDs)-Recommended for heifers. Ranks in the top 1% CED and BW. Attractive bull with athletic movement, long bodied with a deep rib. Top 30% in marbling.

**51** **JTOL OL TOP GUN 542**  
Balancer Bull calved: 1/8/2024 tattoo: 542M reg: AMGV1614194

EGL GAME CHANGER D136  
BGG TOP GUN J011  
BGG BLACK GOLD SANDHILLS 7250E ET

HYEK BLACK IMPACT 3960N  
JTOL 542Y LOVE BI 241S  
JTOL 241S

CED	BW	WW	YW	Milk	CEM	Birth Wt	83
+12.4	+0.3	+81	+125	+26	+7	205 Wt	636
						Scrotal	40
						PAP	42
CW	CREA	MARB	STAY	YG	FPI		
+37	+0.44	+0.3	+17.4	-0.02	+84.73		

BA51.4 • Black • Polled  
542M-Top Gun-(GE-EPDs)- Big growth genetics ranks above average in his growth EPDs. He will add pounds and profit to your calves. Great cow family.

**50** **JTOL OL CAPITAL 722**  
Balancer Bull calved: 1/19/2024 tattoo: 722GM reg: AMGV1614199

LD CAPITALIST 316  
CTR CAPITAL ASSET 9756G  
CTR CTR ALEXIS 324A ET

JKGF DITKA C85  
JTOL LOVE 72C-722G DITKA PAP35  
JTOL 72C LOVELESS 372USM

CED	BW	WW	YW	Milk	CEM	Birth Wt	75
+12.7	-1.6	+63	+90	+27	+7	205 Wt	636
						Scrotal	38
						PAP	33
CW	CREA	MARB	STAY	YG	FPI		
+23	+0.24	+0.34	+20.9	+0	+76.56		

BA46.8 • Black • Polled  
722M-Capital Asset-(GE-EPDs)-Moderate, compact and muscle through out. Excellent bone and a stout structure. Tracks well.

**52** **JTOL OL TOP GUN 233**  
Balancer Bull calved: 1/22/2024 tattoo: 233FM reg: AMGV1615038

EGL GAME CHANGER D136  
BGG TOP GUN J011  
BGG BLACK GOLD SANDHILLS 7250E ET

EGL BARRETT B050  
JTOL 333ZFBARRETT PAP39  
JTOL LOVELESS 333Z BRIGHT SKY

CED	BW	WW	YW	Milk	CEM	Birth Wt	89
+10.8	+1.9	+93	+150	+20	+6	205 Wt	625
						Scrotal	40
						PAP	38
CW	CREA	MARB	STAY	YG	FPI		
+52	+0.37	+0.4	+11	+0.09	+91.47		

BA44.4 • Black • Polled  
233M-Top Gun-(GE-EPDs)- A performance bull with the growth numbers to back it up. Length, muscle, square hiped. Ranks top 10% growth EPDs top 30% in marbling.



**BGG TOP GUN J011**

**53** **JTOL OL TOP GUN 63**  
Balancer Bull calved: 1/24/2024 tattoo: 63FM reg: AMGV1614198

EGL GAME CHANGER D136  
BGG TOP GUN J011  
BGG BLACK GOLD SANDHILLS 7250E ET

WMF BLACK MARBLE TENDER 006X  
JTOL 63BFMT PAP42  
JTOL LOVELESS SANDHILL

CED	BW	WW	YW	Milk	CEM	Birth Wt	88
+11	+1.3	+85	+135	+18	+7	205 Wt	634
						Scrotal	35
						PAP	32
CW	CREA	MARB	STAY	YG	FPI		
+54	+0.62	+0.42	+14.8	-0.1	+88.14		

BA45.2 • Black • Polled  
63M-Top Gun-(GE-EPDs)-Above average in all carcass traits and growth EPDs. This herd bull is thick and stout with long length of spine. Maternal value.



**54**  
Balancer

### JTOL OL 300

Bull calved: 2/10/2024 tattoo: 300M reg: AMGV1614181

EGL GAME CHANGER D136

BGGR TOP GUN J011

BGGR BLACK GOLD SANDHILLS 7250E ET

CTR CTR IMPRESSIVE 5767C

JTOL 300F30B5767 PAP35

JTOL LOVELESS 30B ABS

CED	BW	WW	YW	Milk	CEM	Birth Wt
+11	+0.9	+79	+123	+21	+6	86
						205 Wt
						632
						Scrotal
						36 1/2
						PAP
						48
CW	CREA	MARB	STAY	YG	FPI	
+42	+0.49	+0.39	+14.9	-0.04	+84.15	

BA43.96875 • Black • Polled

300M-Top Gun-(GE-EPDs)-A real stand out, extreme power, thickness and dimension. Big footed with great bone and legs. Out of a great cow family. Ranks in the top 20% in growth and above average on all carcass value.



**55**  
Balancer

### JTOL OL TOP GUN 886

Bull calved: 3/1/2024 tattoo: 886GM reg: AMGV1614203

EGL GAME CHANGER D136

BGGR TOP GUN J011

BGGR BLACK GOLD SANDHILLS 7250E ET

WMF BLACK MARBLE TENDER 006X

JTOL 886HMARB286F PAP35 87VUC3329

JTOL 286PFBI PAP40

CED	BW	WW	YW	Milk	CEM	Birth Wt
+10.7	+0.3	+82	+128	+20	+6	82
						205 Wt
						659
						Scrotal
						35
						PAP
						37
CW	CREA	MARB	STAY	YG	FPI	
+44	+0.4	+0.4	+14.3	-0.02	+86.56	

BA45.2 • Black • Polled

886M-Top Gun-(GE-EPDs)-Thick made deep bodied, sound structured individual that moves out nice. Ranks top 25% in growth and above average in carcass value. Will add performance to your calves.

**57**  
Balancer

### JTOL OL TOP 1191

Bull calved: 1/23/2024 tattoo: 1191BM reg: AMGV1614173

EGL GAME CHANGER D136

BGGR TOP GUN J011

BGGR BLACK GOLD SANDHILLS 7250E ET

K C F BENNETT ABSOLUTE

JTOL LOVELESS 192BABS

JTOL 192Z--189S

CED	BW	WW	YW	Milk	CEM	Birth Wt
+10.5	+0.1	+86	+143	+24	+6	86
						205 Wt
						634
						Scrotal
						37
						PAP
						34
CW	CREA	MARB	STAY	YG	FPI	
+51	+0.5	+0.57	+11.5	+0.03	+94.17	

BA32.7 • Black • Polled

1191M-Top Gun-(GE-EPDs)Powerhouse his extension of spine and neck will be a consistent contributor of pounds, muscle and style. Natural thickness and volume carries a lot of bone. Top 15% in growth, 15% in marbling.

**56**  
Balancer

### JTOL OL TOP SMOKE 1022

Bull calved: 1/26/2024 tattoo: 1022CM reg: AMGV1614161

EGL GAME CHANGER D136

BGGR TOP GUN J011

BGGR BLACK GOLD SANDHILLS 7250E ET

GGGE 3G SMOKE N' MIRRORS

JTOL LOVELESS 022C1SM

JTOL 022 301NBIA ET

CED	BW	WW	YW	Milk	CEM	Birth Wt
+9.2	-0.2	+71	+114	+25	+6	86
						205 Wt
						628
						Scrotal
						35 1/2
						PAP
						40
CW	CREA	MARB	STAY	YG	FPI	
+38	+0.41	+0.44	+14.6	+0.1	+81.47	

BA38.9 • Black • Polled

1022M-Top Gun-(GE-EPDs)-Visually complete, well balanced, stylish and genetically outstanding. Herd improver and performer. Tracks out well. Top 35% on marbling.



**QUEST**  
of the **WEST**

**“The biggest troublemaker you’ll probably ever have to deal with watches you shave his face in the mirror every morning”.**

**58**  
Balancer

### JTOL OL GUS311 11J51

Bull calved: 3/21/2024 tattoo: 11J51M reg: AMGV1614168

JTOL WASATCH ET

JTOL OL WASATCH 311DJ

JTOL 311DLOVELESS 3011T BI

CIRCLE L GUS

JTOL GUS 11Y 11J51E P-32 ET

WRJ SAWTOOTHG MARNEY 11Y

CED	BW	WW	YW	Milk	CEM	Birth Wt
+11.1	+0.6	+79	+119	+24	+6	83
						205 Wt
						634
						Scrotal
						35
						PAP
						32
CW	CREA	MARB	STAY	YG	FPI	
+46	+0.68	+0.23	+11.1	-0.06	+80.99	

PC56.9 • Black • Polled

11J51M-Wasatch 311- pending(GE-EPDs)-Thick, deep, with lots of middle. Sound structured individual that moves out real nice. Easy fleshing. A younger bull with performance. Ranks top 30% growth.

**59** **JTOL OL LOVE311 213**  
 Bull calved: 3/2/2024 tattoo: 213JM reg: AMGV1614174  
 Balancer JTOL WASATCH ET  
 JTOL OL WASATCH 311DJ  
 JTOL 311DLOVELESS 3011T BI

WMF BLACK MARBLE TENDER 006X						Birth Wt	83
<b>JTOL TENDER 3012C 213J P-33</b>						205 Wt	600
JTOL 3011 SH ET 140C ET						Scrotal	37
CED	BW	WW	YW	Milk	CEM	PAP	34
+12.3	+1.8	+74	+111	+22	+6		
CW	CREA	MARB	STAY	YG	FPI		
+30	+0.17	+0.37	+15.2	+0.04	+79.61		

BA56.9 • Black • Polled  
 213M-Wasatch 311-(GE-EPDs)- Moderate, clean made, well balanced. Long ribbed with a thick top. Maternal strengths.



**60** **JTOL OL RETURN 326**  
 Bull calved: 1/23/2024 tattoo: 326EM reg: AMGV1614169  
 Balancer CCMF MR. PAYWEIGHT 19C ET  
 CTR NET RETURN 0700H ET  
 CTR CTR MISS SANDHILLS 2104Z

KCF BENNETT Y504						Birth Wt	90
<b>JTOL 1326BE 504</b>						205 Wt	629
JTOL LOVELESS 325 ABS						Scrotal	35
CED	BW	WW	YW	Milk	CEM	PAP	38
+9.7	+3.2	+73	+123	+20	+5		
CW	CREA	MARB	STAY	YG	FPI		
+46	+0.6	+0.52	+14.3	-0.02	+81.14		

BA46.9 • Black • Polled  
 326M-Net Return-(GE-EPDs)-A power bull adding volume, extra thickness, fleshing ability and carcass quality. Correct feet and legs structurally sound with a great female side. Top 25% marbling.

**61** **JTOL OL RETURN 133**  
 Bull calved: 1/26/2024 tattoo: 133EM reg: AMGV1614170  
 Balancer CCMF MR. PAYWEIGHT 19C ET  
 CTR NET RETURN 0700H ET  
 CTR CTR MISS SANDHILLS 2104Z

KCF BENNETT Y6						Birth Wt	86
<b>JTOL 133BE ET301 Y6</b>						205 Wt	627
JTOL LOVELESS 133 301 BI ET						Scrotal	37
CED	BW	WW	YW	Milk	CEM	PAP	35
+9.2	+2.9	+81	+129	+20	+5		
CW	CREA	MARB	STAY	YG	FPI		
+37	+0.01	+0.47	+15.8	+0.2	+83.49		

BA40.7 • Black • Polled  
 133M-Net Return-(GE-EPDs)-He catches your eye with his thickness throughout. He displays abundant capacity, volume and rib shape. Maternal value a plus. Ranks in top 20% growth, 30% marbling.

**62** **JTOL OL RETURN 221**  
 Bull calved: 1/25/2024 tattoo: 221EM reg: AMGV1614177  
 Balancer CCMF MR. PAYWEIGHT 19C ET  
 CTR NET RETURN 0700H ET  
 CTR CTR MISS SANDHILLS 2104Z

KCF BENNETT Y6						Birth Wt	89
<b>JTOL 221AE Y6</b>						205 Wt	607
JTOL LOVE121RA						Scrotal	35
CED	BW	WW	YW	Milk	CEM	PAP	40
+6.4	+2.1	+73	+108	+16	+4		
CW	CREA	MARB	STAY	YG	FPI		
+36	+0.24	+0.3	+10.2	+0.03	+74.37		

BA43.8 • Black • Polled  
 221M-Net Return-(GE-EPDs)-Clean fronted, moderate framed with power and thickness. Good feet and legs.

**63** **JTOL OL RETURN 022**  
 Bull calved: 1/28/2024 tattoo: 022FM reg: AMGV1614160  
 Balancer CCMF MR. PAYWEIGHT 19C ET  
 CTR NET RETURN 0700H ET  
 CTR CTR MISS SANDHILLS 2104Z

BGR BGR BLK GOLD PAYLOAD 615						Birth Wt	87
<b>JTOL 022AFPAP38</b>						205 Wt	608
JTOL 022 301NBIA ET						Scrotal	33
CED	BW	WW	YW	Milk	CEM	PAP	40
+12.1	+0.1	+61	+100	+19	+7		
CW	CREA	MARB	STAY	YG	FPI		
+25	+0.4	+0.38	+18.1	+0.01	+74.34		

BA48.1 • Black • Polled  
 022M-Net Return-(GE-EPDs)- Well balanced bull. Moderate frame with power, thickness dimension. Exhibits eye appeal.

**64** **JTOL OL RETURN 3**  
 Bull calved: 1/16/2024 tattoo: 3JM reg: AMGV1614184  
 Balancer CCMF MR. PAYWEIGHT 19C ET  
 CTR NET RETURN 0700H ET  
 CTR CTR MISS SANDHILLS 2104Z

DLW SAM ET						Birth Wt	81
<b>JTOL SAM 031Y 3J P-42</b>						205 Wt	596
JTOL 0301Y LOVELESS INDUSTRY						Scrotal	34
CED	BW	WW	YW	Milk	CEM	PAP	39
+9	+1	+70	+112	+23	+5		
CW	CREA	MARB	STAY	YG	FPI		
+42	+0.55	+0.23	+16.5	+0.02	+74.08		

BA46.1 • Black • Polled  
 3M-Net Return-(GE-EPDs)-Nice attractive moderate framed bull. Tracks out well. Good maternal family.



# Protect Your PRF

(Pasture, Rangeland, Forage)



CONTACT

**Mike Browning**  
**801-949-6453**

[mbrowning@ckpinsurance.com](mailto:mbrowning@ckpinsurance.com)



- **Affordable**
- **Backed by the USDA**
- **Protects your cash flow**
- **No record-keeping**
- **Quick & easy claim payments**
- **No adjusters required**

*When buying business insurance, it's okay to have a generalist agent.*

*When buying PRF insurance, it's SMART to have a SPECIALIST.*

## Let CKP Help You Protect Your PRF

Our trusted risk advisors are trained to help you analyze complicated insurance data so you:

- Protect your land and livelihood against potential losses during times of drought.
- Make the most informed decision for your business.
- Never purchase unnecessary coverage and pay more than you need.



Contact your CKP Trusted Risk Advisor today.

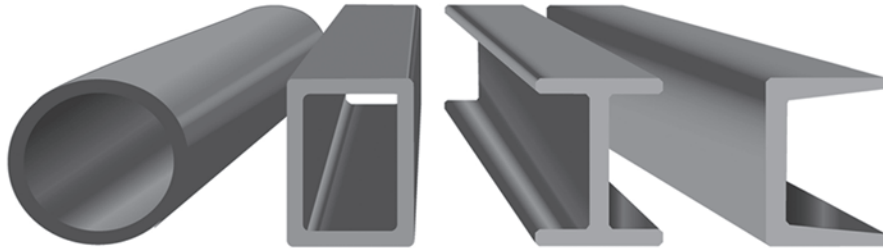


**877-CKP-INS1 (877-257-4671)**

**[ckpinsurance.com](http://ckpinsurance.com)**

*If you can think it we can build it!*

# BARBER METALS



FLAT BAR - PLATE - TUBE - REBAR - CHANNEL  
ALL SIZES AVAILABLE

ALSO:

**Quality Powder  
Coating**

SANDBLASTING - POWDER COATING  
HANDRAILS - RAILING - TRAILERS  
CAR FRAMES - RIMS  
WE CAN COAT ANY METAL, STEEL OR ALUMINUM

812 EAST 1950 NORTH, SPANISH FORK, UT  
PHONE: (801) 794-2573 ~ FAX: (801) 794-1086 EMAIL: BARBERMETALS@YAHOO.COM



Smarter  
Insurance for  
Agriculture.®

Contact me to learn more.



No one knows farming and ranching like Farm Bureau.

For more than 75 years, we've been a trusted insurance leader providing comprehensive coverage for your farm/ranch, your machinery, your livestock -- and so much more. We're proud of our agricultural roots and that we're the #1 ag insurer in our territory.

**FARM BUREAU  
FINANCIAL SERVICES**  
Auto | Home | Life | Annuities | Business | Farm & Ranch

**Melanie Bennett**  
195 N Main St  
Fillmore  
(435) 743-5746  
(435) 864-8085 Cell

2015 SNL P&C Group \_ Farm Bureau Property & Casualty Insurance Company and Western Agricultural Insurance Company direct written premium. Farm Bureau Property & Casualty Insurance Company^, Western Agricultural Insurance Company\*, Farm Bureau Life Insurance Company\*, West Des Moines, IA \*Company providers of Farm Bureau Financial Services PC096 (1-17)

**65** **JTOL OL RETURN 461**  
 Bull calved: 1/26/2024 tattoo: 461GM reg: AMGV1614187  
 CCMF MR. PAYWEIGHT 19C ET  
 CTR NET RETURN 0700H ET  
 CTR CTR MISS SANDHILLS 2104Z

						Birth Wt	<b>81</b>
						205 Wt	<b>604</b>
						Scrotal	<b>36</b>
						PAP	<b>37</b>
CED	BW	WW	YW	Milk	CEM		
<b>+11.1</b>	<b>+0.4</b>	<b>+73</b>	<b>+110</b>	<b>+23</b>	<b>+5</b>		
CW	CREA	MARB	STAY	YG	FPI		
<b>+42</b>	<b>+0.46</b>	<b>+0.09</b>	<b>+12.9</b>	<b>+0</b>	<b>+73.32</b>		

BA46.9 • Black • Polled  
 461M-Net Return-pending(GE-EPDs)-Moderate, compact and muscle throughout.  
 Excellent bone and stout structure.

**66** **JTOL OL RAW HIDE 493**  
 Bull calved: 1/21/2024 tattoo: 493ZM reg: AMGV1616743  
 POSS RAWHIDE  
 DBRG MR RAWHIDE 2137K ET  
 DBRG MS TWISTER 8167F ET

						Birth Wt	<b>93</b>
						205 Wt	<b>637</b>
						Scrotal	<b>35</b>
						PAP	<b>38</b>
CED	BW	WW	YW	Milk	CEM		
<b>+9</b>	<b>+2.2</b>	<b>+89</b>	<b>+138</b>	<b>+22</b>	<b>+4</b>		
CW	CREA	MARB	STAY	YG	FPI		
<b>+43</b>	<b>+0.68</b>	<b>+0.42</b>	<b>+15.5</b>	<b>-0.16</b>	<b>+89.64</b>		

BA50 • Black • Polled  
 493M-Rawhide-pending(GE-EPDs)-A powerfully constructed bull. A phenotypic  
 standout. Will thrive on the range. Ranks above average on carcass value and growth.



**67** **JTOL OL RAIN 258**  
 Bull calved: 1/24/2024 tattoo: 258EM reg: AMGV1614178  
 S A V RAINFALL 6846  
 DBRG MR MOUNTAIN RAIN 1095J  
 DBRG MS OUTLOOK 468B

						Birth Wt	<b>86</b>
						205 Wt	<b>638</b>
						Scrotal	<b>38</b>
						PAP	<b>32</b>
CED	BW	WW	YW	Milk	CEM		
<b>+13</b>	<b>+0.2</b>	<b>+68</b>	<b>+105</b>	<b>+21</b>	<b>+7</b>		
CW	CREA	MARB	STAY	YG	FPI		
<b>+38</b>	<b>+0.42</b>	<b>+0.25</b>	<b>+14.1</b>	<b>-0.01</b>	<b>+75.33</b>		

BA56.1 • Black • Polled  
 258M-Rawhide-(GE-EPDs)-Stretch your calves with this long sided with top and  
 width through the rump. Range ready and powerful.

**68** **JTOL OL RAW HIDE 76J**  
 Bull calved: 1/22/2024 tattoo: 76JM reg: AMGV1616745  
 POSS RAWHIDE  
 DBRG MR RAWHIDE 2137K ET  
 DBRG MS TWISTER 8167F ET

						Birth Wt	<b>70</b>
						205 Wt	<b>589</b>
						Scrotal	<b>35</b>
						PAP	<b>32</b>
CED	BW	WW	YW	Milk	CEM		
<b>+14.5</b>	<b>-2.8</b>	<b>+74</b>	<b>+115</b>	<b>+20</b>	<b>+9</b>		
CW	CREA	MARB	STAY	YG	FPI		
<b>+26</b>	<b>+0.55</b>	<b>+0.46</b>	<b>+19.4</b>	<b>-0.11</b>	<b>+88.53</b>		

BA49.8 • Black • Polled  
 76M-Rawhide-pending(GE-EPDs)-Clean made, well balanced. Modeste birth weight.  
 Ranks in the top 20 % BW, top 30% marbling.



**69** **JTOL OL DIRECT DRIVE 05**  
 Bull calved: 1/1/2024 tattoo: 05KM reg: AMGV1614164  
 V A R DISCOVERY 2240  
 JNCC DIRECT DRIVE 590C  
 JNCC RIKKI FORTUNE 09X

						Birth Wt	<b>86</b>
						205 Wt	<b>636</b>
						Scrotal	<b>37</b>
						PAP	<b>41</b>
CED	BW	WW	YW	Milk	CEM		
<b>+13.7</b>	<b>+0.4</b>	<b>+81</b>	<b>+128</b>	<b>+21</b>	<b>+9</b>		
CW	CREA	MARB	STAY	YG	FPI		
<b>+52</b>	<b>+0.6</b>	<b>+0.4</b>	<b>+14.4</b>	<b>-0.1</b>	<b>+87.6</b>		

BA50.8 • Black • Polled  
 326M-Net Return-(GE-EPDs)-A power bull adding volume, extra thickness, fleshing  
 ability and carcass quality. Correct feet and legs structurally sound with a great female  
 side. Top 25% marbling.



**JNCC-DIRECT-DRIVE-590C**



**70** **JTOL OL DIRECT DRIVE 18KM**  
 Bull calved: 1/12/2024 tattoo: 18KM reg: AMGV1614172  
 V A R DISCOVERY 2240  
 JNCC DIRECT DRIVE 590C  
 JNCC RIKKI FORTUNE 09X

DLW SAM ET							Birth Wt	<b>60</b>
JTOL 18KSAMP33							205 Wt	<b>656</b>
JTOL 218C 18X SH							Scrotal	<b>36 1/2</b>
CED	BW	WW	YW	Milk	CEM	PAP	<b>32</b>	
<b>+16.5</b>	<b>-1.2</b>	<b>+77</b>	<b>+117</b>	<b>+20</b>	<b>+10</b>			
CW	CREA	MARB	STAY	YG	FPI			
<b>+42</b>	<b>+0.39</b>	<b>+0.36</b>	<b>+18.1</b>	<b>+0.02</b>	<b>+85.45</b>			

BA53.2 • Black • Polled  
 18KM-Direct Drive-(GE-EPDs)-Moderate, thick, clean made bull with good feet and legs and sound structure. Great maternal value. Out of a first calf heifer.



**72** **JTOL OL LOVE345 2K**  
 Bull calved: 1/6/2024 tattoo: 2KM reg: AMGV1614216  
 OGS OVER FOR JUSTICE 217F  
 JTOL OL JUSTICE 045K  
 JTOL 045HET254D345 PAP36 87-3344 ET

DLW COPPERFIELD 476H							Birth Wt	<b>71</b>
JTOL 2K CAPITAL P34							205 Wt	<b>649</b>
JTOL LOVELESS STARRY SKY ET							Scrotal	<b>38</b>
CED	BW	WW	YW	Milk	CEM	PAP	<b>43</b>	
<b>+14.7</b>	<b>-0.4</b>	<b>+77</b>	<b>+120</b>	<b>+21</b>	<b>+9</b>			
CW	CREA	MARB	STAY	YG	FPI			
<b>+40</b>	<b>+0.4</b>	<b>+0.55</b>	<b>+17.4</b>	<b>+0</b>	<b>+89.36</b>			

BA45.3 • Black • Polled  
 2KM-Justice 045-(GE-EPDs)-Attractive bull with athletic movement. Square made, thick down the top, long bodied with a deep rib. Great cow family good feet and legs. Ranks top 30% growth, 20% marbling.



**71** **JTOL OL DIRECT DRIVE BLK 41K**  
 Bull calved: 1/2/2024 tattoo: B41M reg: AMGV1614207  
 V A R DISCOVERY 2240  
 JNCC DIRECT DRIVE 590C  
 JNCC RIKKI FORTUNE 09X

DLW COPPERFIELD 476H							Birth Wt	<b>80</b>
JTOL BLK41K CAPITAL P48							205 Wt	<b>524</b>
CTR CTR TUMBLEWEED 4142B							Scrotal	<b>34</b>
CED	BW	WW	YW	Milk	CEM	PAP	<b>39</b>	
<b>+13.9</b>	<b>+0.2</b>	<b>+74</b>	<b>+117</b>	<b>+20</b>	<b>+9</b>			
CW	CREA	MARB	STAY	YG	FPI			
<b>+48</b>	<b>+0.64</b>	<b>+0.45</b>	<b>+14.7</b>	<b>-0.08</b>	<b>+84.37</b>			

BA47.7 • Black • Polled  
 B41M-Direct Drive-pending(GE-EPDs)-Top individual with plenty of dimension, capacity and very powerful. Wide-based stylish bull. Good bone, feet and legs. Ranks above average on all carcass traits and growth.

**73** **JTOL OL LOVE345 49**  
 Bull calved: 1/5/2024 tattoo: 49KM reg: AMGV1614191  
 OGS OVER FOR JUSTICE 217F  
 JTOL OL JUSTICE 045K  
 JTOL 045HET254D345 PAP36 87-3344 ET

EGL DAY MONEY D047 ET							Birth Wt	<b>65</b>
JTOL 49K DAY MONEY P42							205 Wt	<b>631</b>
JTOL 490N SH D							Scrotal	<b>33</b>
CED	BW	WW	YW	Milk	CEM	PAP	<b>42</b>	
<b>+17.1</b>	<b>-2</b>	<b>+70</b>	<b>+109</b>	<b>+22</b>	<b>+9</b>			
CW	CREA	MARB	STAY	YG	FPI			
<b>+42</b>	<b>+0.44</b>	<b>+0.43</b>	<b>+13.5</b>	<b>+0.04</b>	<b>+84.74</b>			

BA50 • Black • Polled  
 49KM-Justice 045-(GE-EPDs)-Recommended for heifers. Super complete bull with thickness across the top and deep in the middle. Very three dimensional. Ranks top 40% marbling. Great cow family longevity



**74** **JTOL OL LOVE 345 176K**  
 Bull calved: 1/15/2024 tattoo: 176KM reg: AMGV1614201  
 Balancer OGSF OVER FOR JUSTICE 217F  
**JTOL OL JUSTICE 045K**  
 JTOL 045HET254D345 PAP36 87-3344 ET

						Birth Wt	<b>75</b>
						205 Wt	<b>626</b>
						Scrotal	<b>35</b>
						PAP	<b>33</b>
CED	BW	WW	YW	Milk	CEM		
<b>+17.9</b>	<b>-1.5</b>	<b>+73</b>	<b>+102</b>	<b>+25</b>	<b>+10</b>		
CW	CREA	MARB	STAY	YG	FPI		
<b>+35</b>	<b>+0.13</b>	<b>+0.56</b>	<b>+20.5</b>	<b>+0.1</b>	<b>+88.45</b>		

BA50 • Black • Polled  
 176KM-Justice 045-pending(GE-EPDs)-Attractive, smooth fronted with extra length and volume. An exceptional calving ease candidate with excellent feet. Great maternal. Top 20% marbling, 10% CED.



**77** **JTOL OL WASATCH 95**  
 Bull calved: 1/26/2024 tattoo: 95CM reg: AMGV1614205  
 Balancer BGR BGR BLK GOLD PAYLOAD 6152  
**JTOL WASATCH ET**  
 CTR POLL STAR 5160E

						Birth Wt	<b>84</b>
						205 Wt	<b>643</b>
						Scrotal	<b>39</b>
						PAP	<b>35</b>
CED	BW	WW	YW	Milk	CEM		
<b>+10.2</b>	<b>-3</b>	<b>+59</b>	<b>+90</b>	<b>+22</b>	<b>+6</b>		
CW	CREA	MARB	STAY	YG	FPI		
<b>+21</b>	<b>+0.16</b>	<b>+0.49</b>	<b>+17.5</b>	<b>+0.05</b>	<b>+78.5</b>		

BA51.2 • Black • Polled  
 95M-Wasatch 305-(GE-EPDs)-Loaded with muscle and thickness. He will add pounds to your calf crop. Visually complete, long bodied and well balanced. He will add fleshing ability. Great maternal strength. Ranks in top 30% in marbling.

**75** **JTOL OL LOVE345 54**  
 Bull calved: 1/23/2024 tattoo: 54KM reg: AMGV1614195  
 Balancer OGSF OVER FOR JUSTICE 217F  
**JTOL OL JUSTICE 045K**  
 JTOL 045HET254D345 PAP36 87-3344 ET

						Birth Wt	<b>80</b>
						205 Wt	<b>628</b>
						Scrotal	<b>34</b>
						PAP	<b>35</b>
CED	BW	WW	YW	Milk	CEM		
<b>+14.4</b>	<b>+0.6</b>	<b>+86</b>	<b>+133</b>	<b>+27</b>	<b>+8</b>		
CW	CREA	MARB	STAY	YG	FPI		
<b>+48</b>	<b>+0.31</b>	<b>+0.48</b>	<b>+18.2</b>	<b>+0.07</b>	<b>+91.91</b>		

BA53.2 • Black • Polled  
 54KM-Justice 045-(GE-EPDs)-Muscle and moderation built for a cowman. Nice EPD profile with maternal strength. Deep rib and lots of thickness. Ranks in top 30% marbling, 10% growth.



**76** **JTOL OL SAM 030**  
 Bull calved: 1/26/2024 tattoo: 030EM reg: AMGV1614208  
 Balancer VRT LAZY TV SAM U451  
**DLW SAM ET**  
 THOMAS LADY JET 6959

						Birth Wt	<b>89</b>
						205 Wt	<b>620</b>
						Scrotal	<b>36 1/2</b>
						PAP	<b>40</b>
CED	BW	WW	YW	Milk	CEM		
<b>+11.8</b>	<b>+1.5</b>	<b>+79</b>	<b>+106</b>	<b>+18</b>	<b>+7</b>		
CW	CREA	MARB	STAY	YG	FPI		
<b>+30</b>	<b>+0.56</b>	<b>+0.4</b>	<b>+20.1</b>	<b>-0.07</b>	<b>+82.74</b>		

BA43.4 • Black • Polled  
 030M-DLW Sam-(GE-EPDs)-He is thick and made right. Comes with excellent feet and extra bone. Powerfully made top to bottom. Solid maternal background. Ranks above average in growth and marbling.

**78** **JTOL OL WASATCH 305 602**  
 Bull calved: 1/21/2024 tattoo: 602DM reg: AMGV1614196  
 Balancer BGR BGR BLK GOLD PAYLOAD 6152  
**JTOL WASATCH ET**  
 CTR POLL STAR 5160E

						Birth Wt	<b>91</b>
						205 Wt	<b>602</b>
						Scrotal	<b>33 1/2</b>
						PAP	<b>35</b>
CED	BW	WW	YW	Milk	CEM		
<b>+6.9</b>	<b>+1.6</b>	<b>+78</b>	<b>+113</b>	<b>+22</b>	<b>+3</b>		
CW	CREA	MARB	STAY	YG	FPI		
<b>+44</b>	<b>+0.51</b>	<b>+0.29</b>	<b>+14.3</b>	<b>-0.06</b>	<b>+78.66</b>		

BA51.2 • Black • Polled  
 602M-Wasatch 305-(GE-EPDs)-This bull is thick and stout with long length of spine. Moderate frame with correct feet. Maternal a plus.



**79** **JTOL OL STIMULAS 8K**  
 Bull calved: 1/5/2024 tattoo: 8KM reg: AMGV1614204  
 Balancer JRI GENERAL PATTON 213B97 ET  
 JRI STIMULUS 214J32  
 JRI MS ENVY ME 214C22

DJS HOWARD 101H						Birth Wt	<b>77</b>
JTOL 8K HOWARD 542 P41 845 ET						205 Wt	<b>625</b>
JTOL 542Y LOVE BI 241S						Scrotal	<b>37</b>
CED	BW	WW	YW	Milk	CEM	PAP	<b>42</b>
<b>+14.3</b>	<b>-0.4</b>	<b>+79</b>	<b>+115</b>	<b>+26</b>	<b>+5</b>		
CW	CREA	MARB	STAY	YG	FPI		
<b>+32</b>	<b>+0.38</b>	<b>+0.16</b>	<b>+11.2</b>	<b>-0.02</b>	<b>+80.7</b>		

BA67.6 • Red • Polled  
 8KM-Stimulus-Red-pending(GE-EPDs)-A real standout, power, thickness and dimension. Sound mover. Good maternal genetics and disposition.

**81** **JTOL OL DRIVE BYE 776**  
 Bull calved: 1/24/2024 tattoo: 776CM reg: AMGV1614200  
 Balancer EGL GAME CHANGER D136  
 CTR CTR DRIVE BYE 80F  
 CTR TINA 3202A

CTR CTR SANDHILLS 0065X						Birth Wt	<b>90</b>
JTOL 776C						205 Wt	<b>616</b>
JTOL 267U						Scrotal	<b>34</b>
CED	BW	WW	YW	Milk	CEM	PAP	<b>42</b>
<b>+8.1</b>	<b>+2</b>	<b>+70</b>	<b>+114</b>	<b>+18</b>	<b>+5</b>		
CW	CREA	MARB	STAY	YG	FPI		
<b>+52</b>	<b>+0.5</b>	<b>+0.29</b>	<b>+11.2</b>	<b>-0.02</b>	<b>+73.97</b>		

BA46.7 • Black • Polled  
 776M-CTR Drive Bye-(GE-EPDs)-A powerfully constructed bull with a lot of class, clean made. Very three dimensional. Maternal a plus. Good footed, big boned.



**82** **JTOL OL LOVE 885J**  
 Bull calved: 2/20/2024 tattoo: 885JM reg: AMGV1614214  
 Balancer EGL GAME CHANGER D136  
 CTR CTR DRIVE BYE 80F  
 CTR TINA 3202A

BGR BGR BLK GOLD PAYLOAD 615						Birth Wt	<b>84</b>
JTOL PL 885J P-31						205 Wt	<b>589</b>
JTOL LOVELESS 885B Y6						Scrotal	<b>34</b>
CED	BW	WW	YW	Milk	CEM	PAP	<b>32</b>
<b>+10.7</b>	<b>+0.3</b>	<b>+73</b>	<b>+111</b>	<b>+20</b>	<b>+6</b>		
CW	CREA	MARB	STAY	YG	FPI		
<b>+42</b>	<b>+0.52</b>	<b>+0.35</b>	<b>+8.9</b>	<b>+0.01</b>	<b>+79.63</b>		

BA47.7296875 • Black • Polled  
 885M-CTR Drive Bye-(GE-EPDs)- Attractive patterned and super sound structured bull with added muscle. Great feet and legs.

**80** **JTOL OL STIMULAS RED 41K**  
 Bull calved: 1/4/2024 tattoo: R411M reg: AMGV1614212  
 Balancer JRI GENERAL PATTON 213B97 ET  
 JRI STIMULUS 214J32  
 JRI MS ENVY ME 214C22

DLW RED POWER 583U						Birth Wt	<b>68</b>
JTOL R41K GUNNER P45						205 Wt	<b>614</b>
JTOL 341C341S SH						Scrotal	<b>33 1/2</b>
CED	BW	WW	YW	Milk	CEM	PAP	<b>41</b>
<b>+13.6</b>	<b>+1.5</b>	<b>+87</b>	<b>+128</b>	<b>+22</b>	<b>+5</b>		
CW	CREA	MARB	STAY	YG	FPI		
<b>+36</b>	<b>+0.47</b>	<b>+0.4</b>	<b>+7.6</b>	<b>-0.07</b>	<b>+88.99</b>		

BA62.5 • Black • Polled  
 R41M-Stimulus-red-(GE-EPDs)-Top individual with plenty of dimensions, capacity and performance. Wide-based, stylish bull. Good bone and feet. Ranks above average in growth and marbling.



**CTR-CTR-DRIVE-BYE-80F**



**Quest of the West**  
— Cattle Sale —  
**SimAngus Bulls**

**83** **JTOL OL HALLS 27**  
Balancer Bull calved: 1/1/2024 tattoo: 27KM reg: AMGV1614179  
BUBS SOUTHERN CHARM AA31  
MCCA HALLS CROSSING 024H  
MCCA ZIVA Z24

WMF BLACK MARBLE TENDER 006X						Birth Wt	<b>60</b>
<b>JTOL 27K MARBLE P38</b>						205 Wt	<b>621</b>
JTOL LOVE 72C-722G DITKA PAP35						Scrotal	<b>37</b>
CE	BW	WW	YW	Milk	CEM	PAP	<b>39</b>
<b>+16.9</b>	<b>-4.7</b>	<b>+58</b>	<b>+90</b>	<b>+21</b>	<b>+9</b>		
CW	CREA	MARB	STAY	YG	FPI		
<b>+28</b>	<b>+0.54</b>	<b>+0.51</b>	<b>+16.5</b>	<b>-0.13</b>	<b>+83.22</b>		

BA48.4 • Black • Polled  
27KM-Silver-(GE-EPDs)-Super complete bull with thickness across the top and deep in the middle. Great disposition. Dam is easy fleshing with beautiful udder and feet.

**84** **JTOL OL GOOD NIGHTS 216**  
Balancer Bull calved: 1/21/2024 tattoo: 216HM reg: AMGV1614175  
CTR GOOD NIGHT 4743P  
CTR GOOD NIGHT 715T  
CTR POLL STAR 5160E

CIRCLE L GUS						Birth Wt	<b>84</b>
<b>JTOL 216H GUS116U PAP36 87VUC3345</b>						205 Wt	<b>618</b>
JTOL LOVELESS CAROL						Scrotal	<b>35</b>
CE	BW	WW	YW	Milk	CEM	PAP	<b>35</b>
<b>+11</b>	<b>+2.1</b>	<b>+69</b>	<b>+106</b>	<b>+21</b>	<b>+7</b>		
CW	CREA	MARB	STAY	YG	FPI		
<b>+30</b>	<b>+0.14</b>	<b>+0.23</b>	<b>+8</b>	<b>-0.03</b>	<b>+72.39</b>		

PC43.8 • Black • Polled  
216M-Good Night-(GE-EPDs)- Well balanced bull. Clean made with a good top. Has a little more leg under him. Maternal value with longevity.

**85** **CFS PATRIARCH M404**  
SimAngus Bull calved: 1/2/24 tattoo: M 404 reg: 4424848  
SS NIAGARA G29  
**TEHAMA PATRIARCH F028**  
TEHAMA ELITE BLACKBIRD DH26

MR SR HIGHLIFE G1609					Birth Wt	<b>78</b>
<b>CFS FUNNY FACE K224</b>					205 Wt	<b>650</b>
CFS MISS MANDY Z232					Scrotal	<b>38</b>
CE	BW	WW	YW	Milk	PAP	<b>38</b>
<b>+15.2</b>	<b>-1.4</b>	<b>+83.9</b>	<b>+144.1</b>	<b>+29.6</b>		
CW	YG	IMF	RE	API	TI	
<b>+50.9</b>	<b>-0.14</b>	<b>+0.46</b>	<b>+0.76</b>	<b>+151.6</b>	<b>+90.8</b>	

Black 1/2 Simmi -1/2 Angus - Thick, wide and deep. Admired by many at weaning time. He has a quiet disposition

**86** **CFS LITTLE EAGLE M405**  
SimAngus Bull calved: 1/2/24 tattoo: M 405 reg: 4424841  
HOOKS BLACK HAWK 50B  
**HOOKS EAGLE 6E**  
HOOKS CRYSTAL 1C

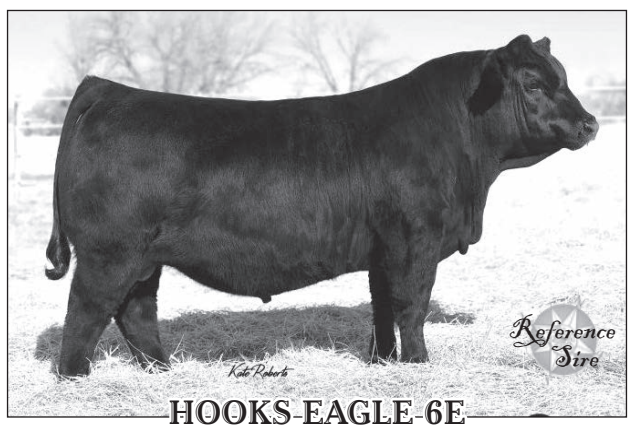
WERNER FLAT TOP 4136					Birth Wt	<b>78</b>
<b>CFS SATIN K209</b>					205 Wt	<b>624</b>
CFS BLACK SATIN D645					Scrotal	<b>45</b>
CE	BW	WW	YW	Milk	PAP	<b>45</b>
<b>+13.9</b>	<b>-0.5</b>	<b>+89.2</b>	<b>+142.7</b>	<b>+24.1</b>		
CW	YG	IMF	RE	API	TI	
<b>+37.9</b>	<b>-0.34</b>	<b>+0.42</b>	<b>+1.08</b>	<b>+147.5</b>	<b>+91.6</b>	

Black 5/8 Simmi- 3/8 Angus - Sired by Hooks Eagle who is known for siring calves that are deep and easy keepers.

**87** **CFS DAYTON M406**  
SimAngus Bull calved: 1/5/24 tattoo: M 406 reg: 4424833  
CONNEALY BLACK GRANITE  
**WERNER FLAT TOP 4136**  
WERNER LADY 0304

HOOKS YELLOWSTONE 97Y					Birth Wt	<b>74</b>
<b>CFS ASPEN K215</b>					205 Wt	<b>543</b>
CFS MISS SADIE D625					Scrotal	<b>33</b>
CE	BW	WW	YW	Milk	PAP	<b>33</b>
<b>+16.3</b>	<b>-2.3</b>	<b>+69.1</b>	<b>+116.9</b>	<b>+27.5</b>		
CW	YG	IMF	RE	API	TI	
<b>+29.1</b>	<b>-0.17</b>	<b>+0.5</b>	<b>+0.57</b>	<b>+148.6</b>	<b>+83.8</b>	

Black 1/2 Simmi-1/2 Angus - Calving ease puts him in the top 15% of breed. Out of a first calf heifer





**88** **CFS GARRISON M408**  
 Bull calved: 1/22/24 tattoo: M 408 reg: 4424828  
 SimAngus CONNEALY BLACK GRANITE  
 WERNER FLAT TOP 4136  
 WERNER LADY 0304

CDI PERSPECTIVE 238A					Birth Wt	<b>81</b>
CFS MISS UTAH H032					205 Wt	<b>654</b>
CFS WHITNEY Z215					Scrotal	
CE	BW	WW	YW	Milk	PAP	<b>38</b>
<b>+15.7</b>	<b>-1.4</b>	<b>+84.3</b>	<b>+138.7</b>	<b>+29.7</b>		
CW	YG	IMF	RE	API	TI	
<b>+39</b>	<b>-0.14</b>	<b>+0.46</b>	<b>+0.63</b>	<b>+153.8</b>	<b>+90.5</b>	

Black 1/2 Simmi-1/2 Angus - Heterozygous black and has a minus EPD birthweight with excellent growth. Out of a good producing dam whose sire is CDI Perspective 238A. He has a calving ease of 15.7 with a birthweight of -1.4



**90** **CFS ROAD HOUSE M417**  
 Bull calved: 2/2/24 tattoo: M 417 reg: 4424861  
 SimAngus YON CHATTONOOGA E46  
 YON COUNTY ROAD H1389  
 YON HAZEL F1045

NICHOLS MANIFEST T79					Birth Wt	<b>80</b>
CFS MISS MANDY Z232					205 Wt	<b>698</b>
CFS DARCY W941					Scrotal	
CE	BW	WW	YW	Milk	PAP	<b>39</b>
<b>+15.1</b>	<b>-0.2</b>	<b>+87.7</b>	<b>+130.8</b>	<b>+32.6</b>		
CW	YG	IMF	RE	API	TI	
<b>+55.3</b>	<b>-0.02</b>	<b>+0.43</b>	<b>+0.61</b>	<b>+142.8</b>	<b>+89.2</b>	

Black 1/2 Simmi-1/2 Angus - Roadhouse is sired by Yon County Road who produces eye appealing seed stock with calving ease. His dam is one of the older cows in our herd still producing good calves at the age of 15 and has raised a calf every year since she was a 2 year old.

**89** **CFS MASON M413**  
 Bull calved: 1/29/24 tattoo: M 413 reg: 4424826  
 SimAngus CCR COWBOY CUT 5048Z  
 TJ FRANCHISE 451D  
 TJ MISS NET WORTH U11

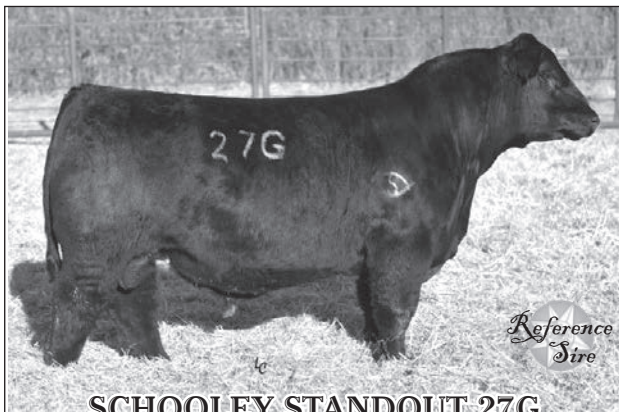
TRIPLE C INVASION R47K					Birth Wt	<b>84</b>
CFS INVASIVE MS Y120					205 Wt	<b>610</b>
CFS SNAPSHOT R504					Scrotal	
CE	BW	WW	YW	Milk	PAP	<b>41</b>
<b>+10.8</b>	<b>+1.7</b>	<b>+64.1</b>	<b>+93.5</b>	<b>+20.0</b>		
CW	YG	IMF	RE	API	TI	
<b>+14.7</b>	<b>-0.19</b>	<b>+0.28</b>	<b>+0.38</b>	<b>+117.1</b>	<b>+97.8</b>	

Black 3/4 Simmi-1/4 Angus - This calf's sire is TJ Franchise 451B who is known for producing eye appealing cattle with good feet and legs.

**91** **CFS WINSOR M428**  
 Bull calved: 2/11/24 tattoo: M 428 reg: 4424825  
 SimAngus HOOKS SHEAR FORCE 38K  
 HOOKS BEACON 56B  
 HOOKS ZAFIRAH 41Z

BPF SPECIAL FOCUS 504					Birth Wt	<b>82</b>
CFS DESARAES FOCUS A303					205 Wt	<b>727</b>
CFS DESA RAE Y146					Scrotal	
CE	BW	WW	YW	Milk	PAP	<b>45</b>
<b>+14.5</b>	<b>-1.3</b>	<b>+85.1</b>	<b>+131</b>	<b>+30.3</b>		
CW	YG	IMF	RE	API	TI	
<b>+45</b>	<b>-0.29</b>	<b>+0.38</b>	<b>+1.2</b>	<b>+158</b>	<b>+93.9</b>	

Black 3/4 Simmi-1/4 Angus - Winsor is sired by Hooks Beacon, a popular Simmental bull. We love daughters out of Beacon. His dam is a grand daughter of Mytty In Focus, a popular Angus bull in years past. She is 12 years old. He has a birthweight EPD of -1.3 and a calving ease EPD of 14.5



**SCHOOLEY-STANDOUT-27G**

**92** **CFS SCHOOLEY M431**  
 Bull calved: 2/13/24 tattoo: M 431 reg: 4424865  
 SimAngus OMF EPIC E27  
 SCHOOLEY STANDOUT 27G  
 CLRS BEAUTY QUEEN 420B

CONNEALY CAPATILIST 028					Birth Wt	<b>78</b>
CFS SADIE G923					205 Wt	<b>646</b>
CFS SADIE W911					Scrotal	
CE	BW	WW	YW	Milk	PAP	<b>34</b>
<b>+14.3</b>	<b>-1</b>	<b>+68.8</b>	<b>+96.7</b>	<b>+23.3</b>		
CW	YG	IMF	RE	API	TI	
<b>+22.7</b>	<b>-0.18</b>	<b>+0.35</b>	<b>+0.43</b>	<b>+138</b>	<b>+76.1</b>	

Black 3/4 Simmi 1/4 Angus - Sired by the calving ease bull Schooley Standout, a calving ease Simmental bull. His dam is sired by Connealy Capatilst, a calving ease Angus bull. This bull has a minus birthweight EPD, a good PAP score and an excellent disposition.

**93****CFS CLASSIC M440**

Bull calved: 2/25/24 tattoo: M 440 reg: 4424858

SimAngus

TJ GOLD 274G

CFS BOULLION K233

CFS PEBBLES G914

CONNEALY CAPATILIST 028

CFS MEGAN F804

CFS BLACK SATIN D645

CE	BW	WW	YW	Milk	Birth Wt	205 Wt	Scrotal
+14.8	-0.9	+80.1	+120.8	+24.4	77	638	PAP
							36
CW	YG	IMF	RE	API	TI		
+29.1	-0.23	+0.34	+0.7	+143	+83.6		

Black 5/8 Simmi- 3/8 Angus- This bull's grand sire is TJ Gold, a moderate framed calving ease bull. His dam is sired by the popular Angus bull Connealy Capitalist. He has a quiet disposition, is eye appealing and has good feet and legs.

**94****CFS WESTON M441**

Bull calved: 2/19/24 tattoo: M 441 reg: 4424819

SimAngus

OMF EPIC E27

SCHOOLEY STANDOUT 27G

CLRS BEAUTY QUEEN 420B

ACW IRONHIDE 395Y

CFS MEGAN J139

GFS MEGAN F804

CE	BW	WW	YW	Milk	Birth Wt	205 Wt	Scrotal
+13.7	-0.7	+67.8	+96.1	+22.0	82	600	PAP
							45
CW	YG	IMF	RE	API	TI		
+25.2	-0.19	+0.31	+0.49	+128.3	+74.2		

Black 3/4 Simmi-1/4 Angus - This bull exhibits eye appeal, adequate growth and quiet disposition. He has a calving ease EPD of 13.7.

**96****S7 Stone Cold 336**

Bull calved: 11/21/23 tattoo: L336 reg: 4454281

SimAngus

TJ Frosty 318E

TJ Stone Cold 336G

TJ 11D

Hooks Shear Force 38K

CFS little Bear Y147

CFS Aspen R460

CE	BW	WW	YW	Milk	Birth Wt	205 Wt	Scrotal
+15.3	-1.3	+82.2	+128.2	+26.9	79	894	PAP
							38
CW	YG	IMF	RE	API	TI		
+32.6	-0.3	+0.31	+0.87	+156.5	+89		

SimAngus blaze faced bull. This white faced SimAngus bull is from a 14-year old purebred cow. Y147 would breed back on the first service every year. If you're looking for a bull with longevity for females, this is your guy.

**TJ-Stone-Cold-336G****95****S7 Black Stone 326**

Bull calved: 11/24/23 tattoo: L326 reg: 4454278

SimAngus

TJ Frosty 318E

TJ Stone Cold 336G

TJ 11D

G A RFail Safe

S7 Miss Whitney

S7 Shear Black G916

CE	BW	WW	YW	Milk	Birth Wt	205 Wt	Scrotal
+13.4	-0.7	+77.5	+127.8	+29	82	817	PAP
							39
CW	YG	IMF	RE	API	TI		
+45.7	-0.06	+0.59	+0.63	+151.8	+87.2		

SimAngus blaze faced bull. Free moving SimAngus white faced bull. The Stone Cold calves are very popular now and out of a unique SimAngus cow. This bull looks good from any angle.

**97****S7 Copperhead 321**

Bull calved: 11/7/23 tattoo: L321 reg: 445283

SimAngus

GW Movin On 183C

GW Copperhead 919G

GW Miss Direct Drive 932E

Hooks Yellowstone 97Y

CFS Josie J125

CFS Abbie B443

CE	BW	WW	YW	Milk	Birth Wt	205 Wt	Scrotal
+13.6	-1	+78.1	+121.6	+29.8	79	805	PAP
							36
CW	YG	IMF	RE	API	TI		
+29.3	-0.38	+0.46	+0.89	+150	+88.7		

**98****S7 Copperhead 332**

Bull calved: 11/18/23 tattoo: L332 reg: 4454285

SimAngus

GW Movin On 183C

GW Copperhead 919G

GW Miss Direct Drive 932E

G A R Fail Safe

S7 Miss Montana

Hills Leverage 604D

CE	BW	WW	YW	Milk	Birth Wt	205 Wt	Scrotal	PAP
+12.1	-0.6	+75.1	+121.9	+30.3	81	828		58
CW	YG	IMF	RE	API	TI			
+35	-0.2	+0.78	+0.67	+155.9	+90.6			

**101**  
SimAngus**99****S7 Copperhead 328**

Bull calved: 11/15/23 tattoo: L328 reg: 4454279

SimAngus

GW Movin On 183C

GW Copperhead 919G

GW Miss Direct Drive 932E

Sydgen Enhance

S7 Black Pepper G923

S7 Jalapeno

CE	BW	WW	YW	Milk	Birth Wt	205 Wt	Scrotal	PAP
+12.8	-1.2	+78.8	+131.1	+27.5	80	813		37
CW	YG	IMF	RE	API	TI			
+35	-0.23	+0.73	+0.69	+157.9	+92.6			

Exactly the size you would expect out of a Sydgen Enhance percentage cow. Out of the ABS popular bull, GW Copperhead.

**101****SAR True North L62**

Bull calved: 12/26/23 tattoo: L62 reg: 4475592

SimAngus

GSC GCCO Dew North 102C

LLW Card True North G71

Cox's Joys Princess 711E

Sankeys Lazer 609 of 6N

SAR Polly N13

SAR Polly K10

CE	BW	WW	YW	Milk	Birth Wt	205 Wt	Scrotal	PAP
+11.4	+0.4	+71.4	+103.9	+16.7	86	580		38
CW	YG	IMF	RE	API	TI			
+27.8	-0.17	+0.32	+0.58	+110.8	+73.2			

True North crosses well on Angus cows. This bull is solid black well put together. He level in his top and hip, big ribbed and clean made in his sheath and front end. He's also great on his feet and legs. Great option for a half blood Simmy bull. PAP score 37 at 7,200 feet. 1/2 SM 1/2 AN.

**100**  
SimAngus**102**  
SimAngus**100****S7 Copperhead 331**

Bull calved: 11/13/23 tattoo: L331 reg: 4454282

SimAngus

GW Movin On 183C

GW Copperhead 919G

GW Miss Direct Drive 932E

CFS Jasper F827

S7 Miss Ruby

S7 Jalapeno

CE	BW	WW	YW	Milk	Birth Wt	205 Wt	Scrotal	PAP
+11.3	+0	+77.4	+116.1	+27.2	82	852		37
CW	YG	IMF	RE	API	TI			
+21.7	-0.39	+0.54	+0.79	+151.1	+98.2			

Only red SimAngus bull in the sale. A lot of generations of red with this bull. He is the only red SimAngus bull in the sale. Has a smooth front end and moves out nice.

**102****SAR True North L64**

Bull calved: 12/27/23 tattoo: L64 reg: 4475585

SimAngus

GSC GCCO Dew North 102C

LLW Card True North G71

Cox's Joys Princess 711E

Lazy JB Dinero 3000

SAR Barbara V25

SAR Miss New Design H5

CE	BW	WW	YW	Milk	Birth Wt	205 Wt	Scrotal	PAP
+13.6	-0.1	+70.6	+108.6	+17.2	88	587		41
CW	YG	IMF	RE	API	TI			
+27.9	-0.13	+0.31	+0.55	+114	+73.7			

Another solid black True North SimAngus bull, who is big ribbed and has a great muscle pattern throughout. He has some extra age and maturity and will be able to go out and cover some cows. Stands on great feet and legs. 1/2 SM 1/2 AN.

**Quest of the West**  
Cattle Sale  
**Simmental Bulls**



**103**  
SimAngus

**103 SBCC Crowd Pleaser M451**  
Bull calved: 3/28/24 tattoo: M451 reg: Pending  
SimAngus CSCX Bandwagon 513A

Minn Crowd Pleaser 137D  
JSC Katie 5S

SCC SCH 24 Karat

851

DHF Undercover Angel

CE	BW	WW	YW	Milk	Birth Wt	98
					205 Wt	35
					Scrotal	
					PAP	
CW	YG	IMF	RE	API	TI	

Blaze faced, primarily SimAngus bull with a shot of Maine. This bull is the youngest in the sale, but quality runs deep. Out of a first calf heifer. He's big barreled, big backed and well balanced from end to end. 1/2 SM 9/32 AN 3/16 MA.



Reference Sire

Minn-Crowd-Pleaser-137D



Reference Sire

LLW-Card-True-North-G71

**104 CFS BUCK HORN M415**  
Bull calved: 1/30/24 tattoo: M 415 reg: 4424816  
Simmental OMF EPIC 327

SCHOOLEY STANDOUT 27G  
CLRS BEAUTY QUEEN 420B

HOOKS YELLOWSTONE 97Y

CFS MANDY J110

CFS MISS MANDY Z232

CE	BW	WW	YW	Milk	Birth Wt	81
+13.5	-0.3	+76.9	+110.4	+27.7	205 Wt	681
					Scrotal	
					PAP	36
CW	YG	IMF	RE	API	TI	
+30	-0.27	+0.29	+0.62	+146.3	+84.1	

A black bull whose sire is Schooley Standout, a calving ease Simmental who exhibits adequate growth and a good disposition. This calf exhibits those same qualities. His dam is sired by Hooks Yellowstone, another calving ease Simmental bull. His daughters have excellent udders and make exceptional mothers.



Reference Sire

TJ-GOLD-274G

**105 CFS STERLING M421**  
Bull calved: 2/5/24 tattoo: M 421 reg: 4424854  
Simmental HOOKS EAGLE 6E

TJ GOLD 274G

TJ 12C

HOOKS YELLOWSTONE 97Y

CFS ASHLEY E732

CFS TRUE BET Y150

CE	BW	WW	YW	Milk	Birth Wt	80
+14.4	-0.5	+74.6	+114.4	+21.9	205 Wt	560
					Scrotal	
					PAP	45
CW	YG	IMF	RE	API	TI	
+21.2	-0.35	+0.34	+0.81	+152.4	+84.7	

A black bull sired by the popular TJ Gold and out of a dam by Hooks Yellowstone. Both are calving ease sires. This bull has a calving ease EPD of 14.4 and a minus birthweight EPD. He is eye appealing and is docile.

# Angus Heifers



Sorensen Angus Ranch has brought a fancy set of Angus and SimAngus heifers. If you were to look at our replacement heifer pen, this group could have been gate cut from them.

All but one of these heifers are the product of our AI/ET program and are from longstanding cow families. The one that isn't AI sired can definitely run with the others. They have been cycling and are ready to breed whenever you are ready.



**106** **SAR Laney C36**  
Cow calved: 12/20/23 tattoo: C36 reg: AAA 21131127  
Mohnen Substantial 272

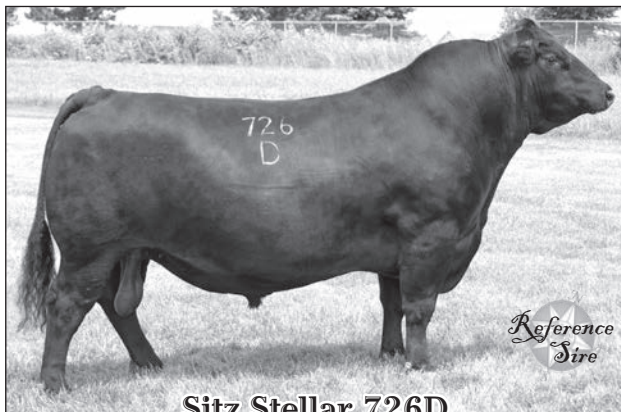
Sitz Stellar 726D  
SITZ Pride 200B

LA Net Worth 954

Rafter 1 Laney Freedom  
SAR Laney M45

CE	BW	WW	YW	Milk	\$EN	Birth Wt	84
-2	+2.6	+61	+110	+21	-19	205 Wt	662
						PAP	
CW	IMF	RE	Fat	\$W	\$F	\$B	
+40	+0.39	+0.36	+0.036	+48	+87	+123	

Years ago we sold a heifer to our good friend Kent Ackerman. He bred her and brought her heifer calf back to a consignment sale. She was the best female at the sale so we bought her. She has always produced high quality offspring. This one is no different. Very high quality female here. Feminine, angular and extended in her front end. She'll be the front pasture kind. We have retained a full sister and two maternal sisters.



Sitz Stellar-726D

**107** **SAR Paisley C30**  
Cow calved: 12/19/23 tattoo: C30 reg: AAA 21131126  
Mohnen Substantial 272

Sitz Stellar 726D  
SITZ Pride 200B

Connealy Black Granite

SAR Paisley W7

SAR Paisley U27

CE	BW	WW	YW	Milk	\$EN	Birth Wt	73
+8	+0.7	+68	+115	+24	-15	205 Wt	633
						PAP	
CW	IMF	RE	Fat	\$W	\$F	\$B	
+46	+0.44	+0.53	+0.059	+67	+98	+136	

Lot 107's dam, W7 who is a Black Granite daughter, made her mark early achieving the Pathfinder status with the AAA. This heifer is maternally bred. Her sire, Stellar, has over 1,900 daughters in production. Great opportunity in this heifer.

**108** **SAR Emblynette C38**  
Cow calved: 12/21/23 tattoo: C38 reg: AAA 21131124  
Sitz Stellar 726D

Sitz Resilient 10208  
Sitz Miss Burgess 1856

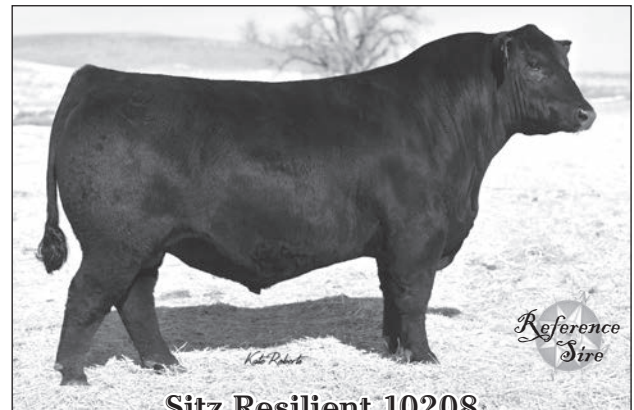
S A V Recharge 3436

SAR Emblynette W44

Champion Hill Emblynette8530

CE	BW	WW	YW	Milk	\$EN	Birth Wt	85
+4	+1.6	+70	+121	+19	-8	205 Wt	678
						PAP	
CW	IMF	RE	Fat	\$W	\$F	\$B	
+41	+0.48	+0.62	-0.007	+63	+81	+127	

This heifer combines breeding directly from two of the largest Angus ranches in the country, Sitz on the top and Schaff on the bottom. Phenotypically, she has the goods and numbers to go with her breeding.



Sitz-Resilient-10208



SITZ-Incentive-704H



**109** **SAR Queen Blackcap C15**  
 Angus Cow calved: 12/16/23 tattoo: C15 reg: AAA 21131118  
 Sitz Stellar 726D  
**SITZ Incentive 704H**  
 SITZ Barabamere Nell 53F

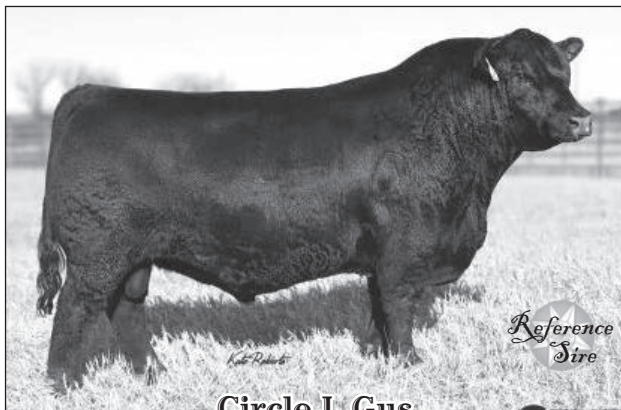
							Birth Wt	<b>70</b>
							205 Wt	<b>630</b>
							PAP	
CE	BW	WW	YW	Milk	\$EN			
<b>+5</b>	<b>+1.5</b>	<b>+76</b>	<b>+124</b>	<b>+24</b>	<b>-14</b>			
CW	IMF	RE	Fat	\$W	\$F	\$B		
				<b>+67</b>	<b>+81</b>			

Another fancy breeding piece here. We have multiple cows in our herd from this cow family. They are all phenotypic standouts. This one sired by Incentive is no different.

**110** **SAR New Bride C47**  
 Angus Cow calved: 12/23/23 tattoo: C47 reg: AAA 21131121  
 Sitz Stellar 726D  
**SITZ Incentive 704H**  
 SITZ Barabamere Nell 53F

							Birth Wt	<b>73</b>
							205 Wt	<b>568</b>
							PAP	
CE	BW	WW	YW	Milk	\$EN			
<b>+7</b>	<b>+1</b>	<b>+65</b>	<b>+109</b>	<b>+22</b>	<b>-14</b>			
CW	IMF	RE	Fat	\$W	\$F	\$B		
				<b>+56</b>	<b>+76</b>			

Moderate framed Incentive daughter that is built right. Nice EPD profile that leaves you with many options of how to breed her.



Circle-L-Gus

**111** **SAR Paisley C4**  
 Angus Cow calved: 11/25/23 tattoo: C4 reg: AAA 21131099  
 S Chisum 6175  
**Circle L Gus**  
 Circle L PRIDE X097

							Birth Wt	<b>70</b>
							205 Wt	<b>671</b>
							PAP	
CE	BW	WW	YW	Milk	\$EN			
<b>+11</b>	<b>-0.1</b>	<b>+58</b>	<b>+99</b>	<b>+22</b>	<b>+6</b>			
CW	IMF	RE	Fat	\$W	\$F	\$B		
				<b>+52</b>	<b>+73</b>			

The first of three outstanding Gus daughters. This one is out of a first calf heifer by Musgrave Sky High. Feminine made and should be the easy keeping kind.



**112** **SAR Serena C44**  
 Angus Cow calved: 12/22/23 tattoo: C44 reg: AAA 21131102  
 S Chisum 6175  
**Circle L Gus**  
 Circle L PRIDE X097

							Birth Wt	<b>73</b>
							205 Wt	<b>685</b>
							PAP	
CE	BW	WW	YW	Milk	\$EN			
<b>+7</b>	<b>+0.8</b>	<b>+60</b>	<b>+101</b>	<b>+25</b>	<b>-7</b>			
CW	IMF	RE	Fat	\$W	\$F	\$B		
<b>+50</b>	<b>+0.37</b>	<b>+0.62</b>	<b>+0.032</b>	<b>+61</b>	<b>+110</b>	<b>+147</b>		

Lot 112's dam is a Pathfinder in the AAA, who has a calving interval of 368 days and a WR 5@106. C44 is big bodied, angular and correct. She'll be a power cow.

**113** **SAR Forever Lady C61**  
 Angus Cow calved: 12/25/23 tattoo: C61 reg: AAA 21131103  
 S Chisum 6175  
**Circle L Gus**  
 Circle L PRIDE X097

							Birth Wt	<b>82</b>
							205 Wt	<b>636</b>
							PAP	
CE	BW	WW	YW	Milk	\$EN			
<b>+6</b>	<b>+1.5</b>	<b>+63</b>	<b>+116</b>	<b>+24</b>	<b>-6</b>			
CW	IMF	RE	Fat	\$W	\$F	\$B		
<b>+57</b>	<b>+0.34</b>	<b>+0.75</b>	<b>+0.055</b>	<b>+60</b>	<b>+118</b>	<b>+154</b>		

C61 fits the mold of the typical Gus daughter. We have retained a full sib so we decided to offer this one in the sale. Balanced set of EPD's straight through.

**114****SAR Emblynette C23**

Angus Cow calved: 12/18/23 tattoo: C23 reg: AAA 21139809

Coleman Charlo 0256

**S A V Chunk 8253**

S A V Blackcap May 3501

S A V Perfection 1891

**Champion Hill Emblynette8530**

Champion Hill EMBLYNETTE6539

CE	BW	WW	YW	Milk	\$EN	PAP	Birth Wt	205 Wt
+0	+2.3	+64	+107	+15	+6		77	633
CW	IMF	RE	Fat	\$W	\$F	\$B		
+36	+0.31	+0.61	+0.005	+54	+85	+122		

We have a full sister to this heifer that calved as a first calf heifer this winter and had two ET fulls sisters in this calf crop so we are letting one go. Comes from the same cow family as Lot 108. This heifer is Schaff bred top and bottom.



**Quest**  
of the West  
Cattle Sale

**SimAngus Heifers****115****SAR Northern Miss L43**

SimAngus

Cow calved: 12/22/23 tattoo: L43 reg: 4475586

GSC GCCO Dew North 102C

**LLW Card True North G71**

Cox's Joys Princess 711E

Lazy JB Dinero 3000

**SAR Jacey T65**

SAR Jacey K5

CE	BW	WW	YW	Milk	Birth Wt	205 Wt
+14	-0.5	+72.8	+109.4	+16.9	79	570
CW	YG	IMF	RE	API	TI	
+24.3	-0.13	+0.3	+0.51	+116.9	+75.2	

At SAR our main focus is raising Angus cattle, but we've bred a handful of cows to really good Simmy bulls and like the result. We might be crazy for selling some of these fancy females, our loss is your gain! Take a close look at this one. She is so sound on the move and is built right from the ground up. The options of how to use this one are endless. The touch of chrome on her face and underline is an added bonus. 1/2 SM 1/2 AN.

**LLW-Card-True-North-G71****116****SAR Northern Miss L63**

SimAngus

Cow calved: 12/26/23 tattoo: L63 reg: 4474590

GSC GCCO Dew North 102C

**LLW Card True North G71**

Cox's Joys Princess 711E

Lazy JB Dinero 8125

**SAR Paisley Y79**

SAR Paisley V19

CE	BW	WW	YW	Milk	Birth Wt	205 Wt
+12.7	-0.1	+78.6	+118.4	+22.2	84	685
CW	YG	IMF	RE	API	TI	
+36.3	-0.16	+0.23	+0.78	+117.5	+77	

What an eye catcher! This bald faced True North daughter is extended in her front end, angular and stands on good bone. You'll travel a long way to find a female of this quality. Take advantage here. 1/2 SM 1/2 AN

**117****SAR Emblynette M84**

SimAngus

Cow calved: 1/24/24 tattoo: M84 reg: 4475591

Sitz Logo 8148

**Sitz Logo 539K**

Sitz Epponia 223C

SVF Steel Force S701

**SAR Emblynette G24**

Spruce Mountain Emblynette 2134

CE	BW	WW	YW	Milk	Birth Wt	205 Wt
+13.1	+0.3	+80.9	+126.1	+22.7	78	596
CW	YG	IMF	RE	API	TI	
+54.6	-0.02	+0.56	+0.78	+131.6	+84.5	

The last time we brought a daughter of this Steel Force cow, she found lots of friends so we thought we would bring another one. This heifer is sired by our Sitz Logo herd bull. Another feminine, well balanced, nice fronted female that can travel. 1/4 SM 3/4 AN.





# ABOVE AVERAGE GOALS REQUIRE TARGETED BULLS

*Aim High*

The Targeting the Brand™ logo highlights registered Angus bulls with greater genetic potential to produce calves that meet the most challenging specifications of the *Certified Angus Beef*® brand.

*Minimum Genetic Requirements*

Marbling EPD (Marb)	+0.65
Dollar Grid Carcass Index (\$G)	+55.0

**Only 1 in 4 non-parent Angus bulls qualify.**



For more information on Targeting the Brand™ visit [CABcattle.com](http://CABcattle.com).

# *Sale Notes*

## *Pricing A Bull*



We have all been asked to speculate what the prices of bulls are going to be from year to year. With the price of cattle in historic ranges, and the declaration of some economists that the “traditional” cattle cycle is dead, it may be hard to determine just what a bull is worth. Several people over the years have come up with formulas that could blow up any cowboy’s smart phone when trying to calculate the worth of a bull.

However, even with all these new fangled formulas,  
there are some tried and true calculations that have stood the test of time.

One of the formulas that has stood the test of time with history proving the theory shows that the price of three 800 lb steers is equal to the base price of one bull. We all know the expensive costs of developing a bull properly and the costs of making sure he is ready to breed cows. And we know that a quality bull will yield you more dollars than an average or lesser quality bull when you market your calves, but we feel the above formula (Cost of 800 lb steer X 3 = Base cost of a bull) is a good place to start in determining the base price of a bull.



*Thanks for Coming  
to the Sale!*

**Quest**  
*of the* **West**  
— Cattle Sale —

**CINCH SORENSEN 385-535-1250**

PIPE FENCE	MACHINERY BUCKETS
GATES	CUSTOM FABRICATION
REPAIRS	TRAILERS + MORE!
CORRALS	SPANISH FORK, UTAH



# DEPENDABLE RESILIENT DETERMINED

Western AgCredit, the  
DEPENDABLE lender RESILIENT  
even during difficult times and  
DETERMINED to help you succeed,  
that ain't no bull!



1.800.824.9198  
westernagcredit.com



## CUSTOMIZED GROWTH SOLUTIONS

At Mountain West Agriculture, We're More Than Just A Company; We're Your Partners In Cultivation. Our Dedication To Your Growth Drives Us To Offer Unparalleled Agricultural Solutions Tailored To Your Unique Needs.

**CUSTOM FERTILIZER BLENDS | CUSTOM SPRAYING | GYPUSM  
DISTRIBUTOR | SEED APPLICATION | FERTILIZER & COMPOST |  
BAILING TWINE (BRIDON PRODUCTS)**



**801.888.2775**

OFFICE@MOUNTAINWESTAG.US

# WHOLESALE FARM & RANCH SUPPLIES

**\$62<sup>50</sup>**  
EA.

FIVE LITER  
IVERMECTIN  
POUR ON

## BULL SALE SPECIAL

Offer valid through 3/15/25. Not valid with other coupons. No limit on amount. Show us this coupon to get the deal!

**OKBRAND**  
FENCING PRODUCTS

**POWDER  
RIVER**

*Elanco*

**VITALIX**  
INC.™

**YOUR LOCAL SOURCE FOR LIVESTOCK EQUIPMENT AND SUPPLIES**

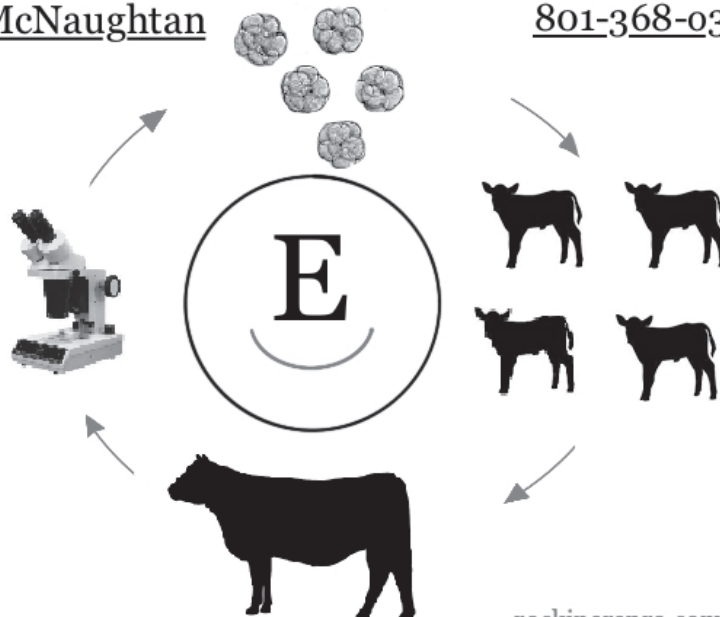


We have everything you need for your home and ranch. Visit our Spanish Fork store to get the deal. 721 S Main St. Shop online pick up in store, anytime at [www.steveregan.com](http://www.steveregan.com)

## Rockin E Reproduction

Jared McNaughtan

801-368-0362



[rockinerepro.com](http://rockinerepro.com)  
[rockinerepro@gmail.com](mailto:rockinerepro@gmail.com)

# TOUGH ON TOUGH WORMS, EASY ON CATTLE PRODUCERS.

## INTRODUCING **VALCOR**<sup>™</sup> (doramectin and levamisole injection)

Now you can achieve effective parasite control in one product, where before you may have needed two. Valcor (*doramectin and levamisole injection*) is the first prescription cattle dewormer with two active ingredients in one dose. It's never been easier to be tough. Get tough at [ValcorTough.com](http://ValcorTough.com).



**IMPORTANT SAFETY INFORMATION:** Do not treat cattle with Valcor within 15 days of slaughter. Not for use in female dairy cattle 20 months of age or older, including dry dairy cows; not for use in beef calves less than 2 months of age, dairy calves, and veal calves. Safety has not been evaluated in breeding bulls. Use with caution in cattle treated with cholinesterase inhibitors. This product is likely to cause injection site swelling; tissue damage (including granulomas and necrosis) may occur. These reactions have resolved without treatment. See Brief Summary of Full Prescribing Information on the next page.



Thanks for your support!

20th Annual

Quest  
of the West

— Cattle Sale —





5626 SOUTH 4800 WEST  
SPANISH FORK, UT 84660

Presorted  
**FIRST CLASS**  
US Postage  
Paid  
Ballyhoo Printing  
59457

**FIRST CLASS**

*Friday March 7th, 2025*

**6:00 P.M. SALE TIME**

**SPANISH FORK FAIRGROUNDS**

**SPANISH FORK, UT.**

**DINNER SERVED AT 5:00 P.M.**

PLEASE BRING THIS CATALOG  
WITH YOU TO THE SALE.

*Their Progeny Sell!*



SITZ RESILIENT 10208 (AN)



HOOKS EAGLE 6E (SM)



GAME CHANGER D136 (BA)



CIRCLE L GUS (AN)



TJ STONE COLD 336G (SM)



MCCA GUNNER 947G (BA)

**LONG YEARLING AND YEARLING BULLS**

**TRICH & FERTILITY TESTED - TESTED BVD-PI NEGATIVE**

ALL CATTLE PAP TESTED *Above 7200 Ft!* BY DR. RUSTY TRUMAN, DVM  
**ANGUS - BALANCER - SIMANGUS - SIMMENTAL**